

ITEM DETAILS - 2022 Doosan B15T-7

Friday, August 30, 2024

DETAILED EQUIPMENT INFORMATION

A qualified Ritchie Bros. employee collected detailed equipment information and performed functional tests on the key components of this asset.

General Appearance

Serial Number / VIN: FBA381007036

Seller Reference Number: Seller Reference or Fleet Number:

Tires/ Undercarriage: Percentage Rating:

Hour Meter / Odometer: 0 See Report, Meter reading could not be obtained

Condition: Overall Condition for Age:, Fair

Features: 3 Stage Mast, Full Free Lift, 187 in Max Lift Height, 83 in Lowered Mast Height, 47 in Forks, Side Shift, 36 V



Model Description

Model Description: 2600 lb

Features

Features: Lift Truck Details:, Number of Mast Stages: 3 Stage Mast, Full Free Lift, Max Lift Height: 187 in Max Lift Height, Lowered Mast Height: 83 in Lowered Mast Height, 47 in Forks, Side Shift, Electric Powered, 36 V

Control Station

Limited Function Check: The item was not operational. The main components could not be operationally checked.



Electrical

Electric: The batteries are not charged, the item could not be operationally checked.



Drivetrain

Limited Function Check: The drivetrain could not be operationally checked.

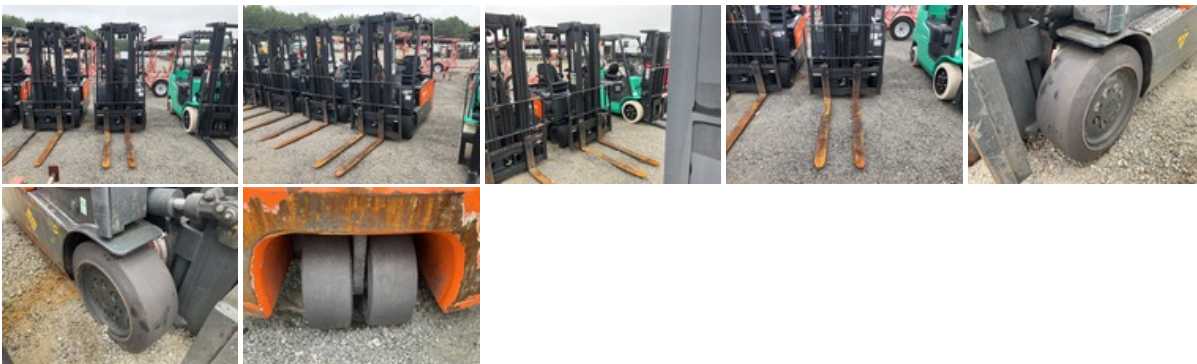


Hydraulics

Limited Function Check: The hydraulic system could not be operationally checked.



Chassis



Deficiencies

Deficiencies: Deficient Components/Systems Include but are not limited to: Electric Section CNV Functionality, batteries are not charged

DISCLAIMER

General

The Detailed Equipment Information is limited in scope, and Ritchie Bros. Auctioneers has not inspected any aspects or components of the equipment other than those expressly set forth herein. Unless expressly stated, we make no representations or warranties, express or implied, concerning the equipment or its components, including without limitation any representations or warranties concerning functionality, conformity or compliance with any safety standard or requirement of any applicable authority or regulatory body, fitness for any particular purpose, or merchantability. You are strongly advised to perform your own detailed inspection of the equipment prior to bidding.

Functions

Equipment is not tested under load. We make no representation or warranty that equipment is operating in accordance with manufacturers' specifications. No inspection has been performed with respect to any functionality aspect other than those expressly included herein. Only select photos have been provided for individual undercarriage components, and may not be indicative of the condition of the entire undercarriage as a whole.

Dimensions

Measurements are given as an estimate only. Actual loaded dimensions may vary based on truck/trailer height and the loaded machine configuration/position. It is the buyer's responsibility to measure all loads before leaving our auction site to ensure the load is safe for transport. All measurements should be verified by the buyer. DO NOT rely on these measurements for transportation purposes