

BOBCAT EQUIPMENT CONDITION REPORT

For more information, visit:
wellsfargo.com/equipmentseller



Commerical Vehicle Inspection Group
Truck, Tractor, Trailer, and Equipment
Inspections throughout North America
203-628-4325 info@cvig.com

Make:	Bobcat	Type:	Skid Steer	Inspector:	PM
Model:	S76	Hours:	1722	Inspection Date:	1/27/2025
SN:	B4CD14484	Year:	2021		

SPECIFICATIONS

ROPS:	Yes	Hours:	1722				
Enclosed Cab:	Yes	Cab Heat:	Yes	Cab A/C:	Yes	Controls:	Selectable Joystick Controls
Attachment on Machine:	74" Bucket						
Additional Attachments:	N/A						
2-Speed:	Yes	Engine MFR:	BOBCAT	Tires			
High Flow Hydraulics - Sticker:	No	Power Bob-Tach:	Yes	Keyless Start:	Yes		
Backup Camera:	Yes	Ride Control:	Yes	Deluxe Instrumentation:	Yes		
Hydraulic X-Change:	No						
Comments and Defects:	CENTER OF LOT /ENG COMPARTMENT WET/OILY,						

BOBCAT EQUIPMENT CONDITION REPORT

For more information, visit:
wellsfargo.com/equipseller



Commerical Vehicle Inspection Group
Truck, Tractor, Trailer, and Equipment
Inspections throughout North America
203-628-4325 info@cvigna.com

Tire Fault Legend			
C - Cut	D - Dry	F - Flat	M - Mismatched Tread / Casings
WD - Wheel Damage			

FRONT AXLE		
Make: PROWLER Part #: 7246214 Measure: 14 / 32 Condition: FAIR Tread Remaining: Over 50% Fault:		Make: PROWLER Part #: 7246215 Measure: 10 / 32 Condition: FAIR Tread Remaining: Under 50% Fault:

REAR AXLE		
Make: PROWLER Part #: 7246214 Measure: 10 / 32 Condition: FAIR Tread Remaining: Over 50% Fault:		Make: PROWLER Part #: 7246215 Measure: 13 / 32 Condition: FAIR Tread Remaining: Over 50% Fault:

BOBCAT EQUIPMENT CONDITION REPORT

For more information, visit:
wellsfargo.com/equipseller



Commerical Vehicle Inspection Group
Truck, Tractor, Trailer, and Equipment
Inspections throughout North America
203-628-4325 info@cvigna.com

CONDITION REPORT

	Check	Comments / Deficiencies
X	Visual Inspection	MUD
X	Operational Test	DOES NOT START/ATTEMPTED TO JUMP START/ ACTIVE STARTER CODE NEEDS DIAGNOSED
✓	Lift Cylinders	NO LEAKS
✓	Tilt Cylinders	NO LEAKS
N/A	Boom Arms Operations	NON OPERATIONAL
✓	Seat	GOOD CONDITION
X	Tailgate Lights	BROKEN
X	Working Lights	NON OPERATIONAL
✓	Front Door	NO DAMAGES WIPER ARM MISSING DOOR SHOCK MISSING
✓	Rear and Top Window	NO DAMAGES
✓	Side Glass Complete	NO DAMAGES
✓	Boom Arms Damages	NO DAMAGES
✓	Rear Door	OPENS AND CLOSES AND STAYS CLOSED
✓	Mufflers	GOOD CONDITION
✓	ROPS Condition	GOOD CONDITION
✓	Power Bob-Tach Condition	NON OPERATIONAL
X	Cab A-C Condition	NON OPERATIONAL, UNABLE TO CHECK DUE TO WEATHER BLOWER NOT COMING ON/ NEEDS DIAGNOSED
X	Cab Heat Condition	NON OPERATIONAL BLOWER NOT COMING ON
✓	Intake Screen	GOOD CONDITION
X	Eng. Compartment	APEARS TO HAVE LEAK NEEDS CLEANED AND CHECKED/COVERED IN OIL/HYDRAULIC
N/A	Hydraulic X-Change Condition	
✓	Customer Decals Visible on Unit	NO
X	Error Codes	STARTER CODE
X	Front Right Tire Depth Percentage	FRONT RIGHT TIRE UNDER 50%
X	Condition Report	UNABLE TO OPERATE UNIT LOCATION ATEMPTED TO JUMP START MULTIPLE TIMES
X	Condition Report	NEEDS STARTED/ CHECKED
X	Condition Report	SCRATCHES/DECALS SCRATCHED OFF AROUND UNIT

PHOTOS



Front Left



Front Right



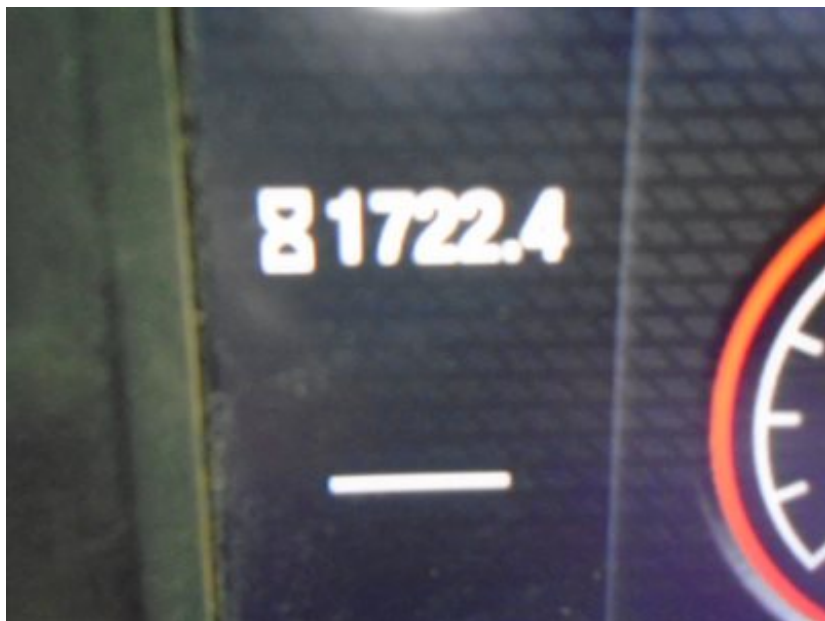
Rear



PHOTOS



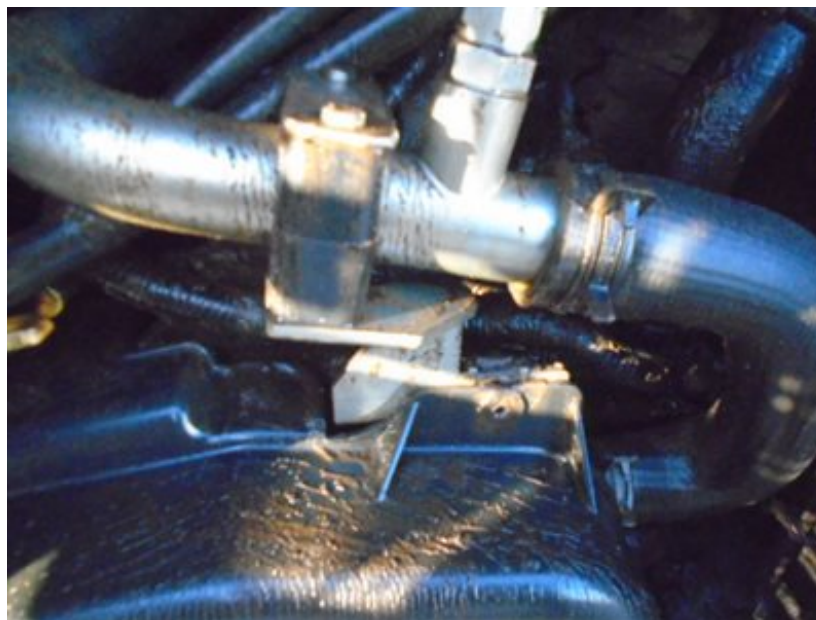
PHOTOS



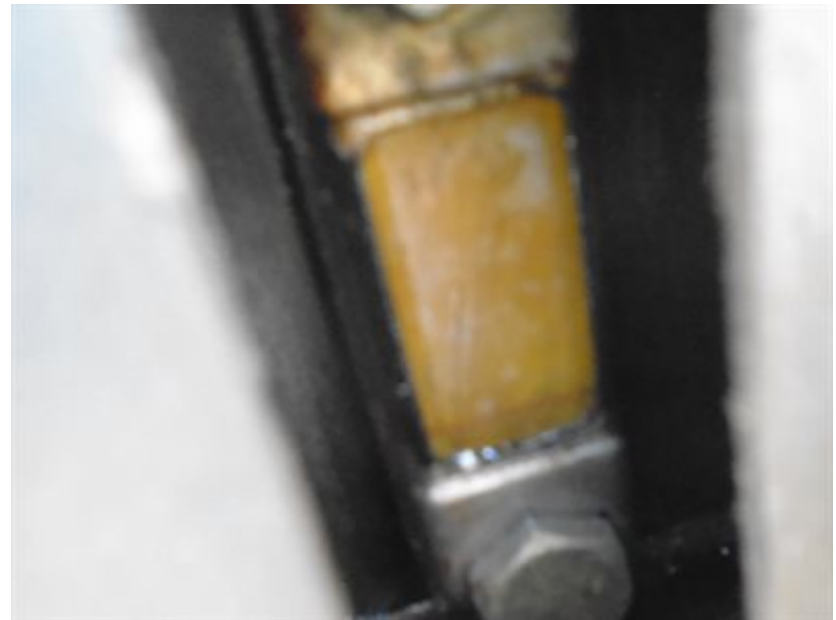
PHOTOS



PHOTOS



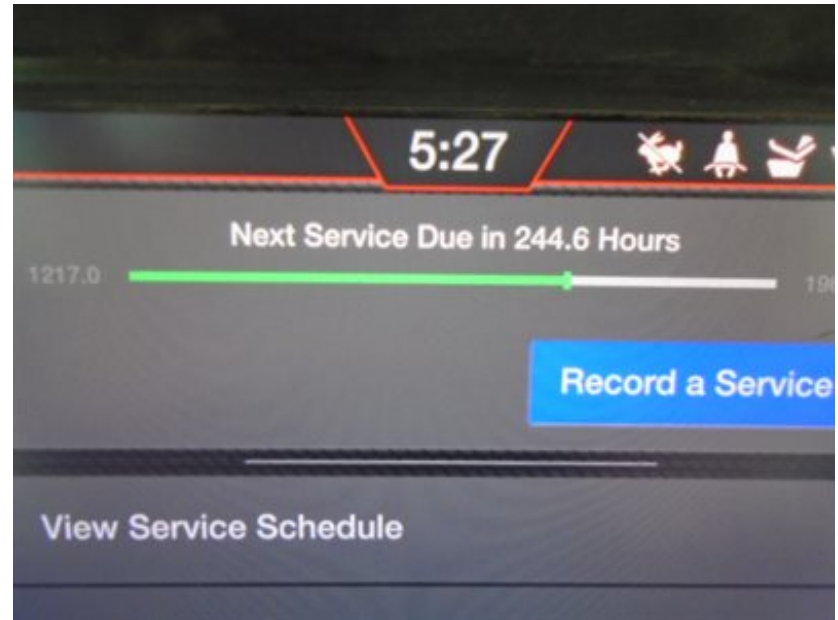
PHOTOS



PHOTOS



PHOTOS



PHOTOS



PHOTOS



Seating / Interior

PHOTOS

