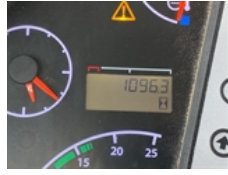


2018 JCB 3CX

UNIT: JCB3CXAPJG2449919

[Download Reconditioning Printout](#)










UNIT SPECS

Customer Wells Fargo (IMS)

LOCATION

Wells Fargo (IMS) 
Please call Pickup Support for location information
Perris, CA 92571

GENERAL APPERANCE

UID JCB3CXAPJG2449919

Pre-Operational Checks

low hydraulic fluid , Confirm Fluids Checked: Engine Coolant. Confirm Fluids Checked: Engine(s) Oil. Confirm Fluids Checked: Transmission Fluid. Confirm Fluids Checked: Hydraulic Fluid. Confirm Fluids Checked: Fuel Level

Paint No visible damage

Body Panels

Are any body panels damaged or missing?, Left engine cover damaged, Grille damaged

Fenders No visible damage or missing components.

Steps/Ladders

No visible damage or missing components.

Hand Rails No visible damage or missing components

Lights/Wiring Condition All lights operational

MODEL DESCRIPTION

Model 3CX **Drive Type** 4x4

SAFETY

Travel Alarm	Inoperable	Horn	Operational
Seat Belts	Operational	Safety Lock Out/Stop	Operational
Current Safety Manual	No	Current Operator/Maintenance Manual	Yes

CONTROL STATION

Control Station Details

Enclosed Cab, Air Conditioner, Air Ride Seat, Backhoe Pilot Controls, Control Pattern Changer, Powershift Transmission

Seats/Armrests

No visible damage or missing components

Glass

No visible damage or missing components

Cab Doors No visible damage or missing components **Steering Control Rating** Good

Hydraulic Controls Rating Good **Drivetrain Controls Rating** Good

Transmission Disconnect Rating Good **Controls** Equipped with a control pattern changer

Dash Console Rating Good **Oil Pressure**
The fault indicator shuts off after the engine oil pressure rises.

Gauges Operational **Hour Meter/Odometer (Start)** 1096.3 hrs

Hour Meter/Odometer 1097.7 hrs, Operational hour meter **Cab Air Conditioner** Inoperable

Cab Heater Operational

Limited Function Check (Control Station)

The main components are in place and operational as noted.

Warning Lights

Operational, Warning light stays on. Check washer fluid message stays on.

ENGINE

A/C Compressor Compressor will not engage **Blow By** No noticeable vapor or pressure

Starter Operational **Exhaust System**
No visible damage or missing components

Radiator Good **Oil Leaks** No dripping leaks

Fuel Leaks No dripping leaks **Coolant Leaks?** No dripping leaks

Engine - Left Side 2016 US EPA Label, Requires Diesel Exhaust Fluid **Limited Function Check (Engine)**
The engine started and ran.

DRIVETRAIN

Transmission	Operational	Transmission Rating	Good
Transfer Case / Drop Box	Operational	Transfer Case / Drop Box Rating	Good
Front Axle Rating	Good	Front Axle Oscillating Pin Rating	Good
Rear Axle Rating	Good	Final Drives Rating	Good
Limited Function Check (Backhoe) The drivetrain was operational.			

HYDRAULICS

Pumps (Hydraulics) Rating	Good	Valves Rating	Good
Hydraulic Tank Rating	Good	Auxiliary Hydraulic Plumbing Not operationally checked, Front, Rear	
Loader Lift Cylinders Rating	Good	Bucket Tilt Cylinders Rating	Good
Multi Purpose Bucket Cylinders Rating	Good	Steering Cylinders Rating	Good
Outrigger Cylinders	Not visible	Outrigger Cylinders Rating	Good
Boom Swing Cylinders Rating	Good	Boom Lift Cylinder Condition	Good
Stick Cylinder Condition	Good	Bucket Cylinder	Dripping leak
Bucket Cylinder Condition	Fair	Limited Function Check (Hydraulics) The hydraulic system was operational.	

CHASSIS

Steering Linkage Rating	Good	Master Cylinder Rating	Good
Park Brake	Stopped from a slow roll	Park Brake Rating	Good
Limited Function Check (Brakes) The brake system functioned, stopping and holding the machine.		Frame Condition	Good
Right Front Tire Size: 340/80-18 Brand: Michelin Model: XMCL Tread Depth: 7/32		Left Front Tire Size: 340/80-18 Brand: Michelin Model: XMCL Tread Depth: 12/32	
Left Rear Tire Size: 440/80-28 Brand: Michelin Model: XMCL Tread Depth: 30/32		Right Rear Tire Size: 440/80-28 Brand: Michelin Model: XMCL Tread Depth: 30/32	
		Wheel Condition No visible damage or missing components	

FRONT ATTACHMENT

Front Attachment

Front Attachment Details, Auxiliary Hydraulics, Quick Coupler Type: Hydraulic Coupler, 92 in Bucket Type: Multi-Purpose Loader Bucket, Forks

CHASSIS LOADER

Lift Arm Condition Rating	Good	Chassis to Arm Pins Rating	Good
Tilt Linkage	Good	Tilt Linkage Pins and Bushings Rating	Good
Quick Coupler to Arms Pins Rating	Good		

REAR ATTACHMENT

Rear Attachment

Side Shift, Stick Type:, Extendable Stick, Coupler Type:, Hydraulic Quick Coupler, Bucket Size: 24 in Backhoe Bucket Type: Bucket, , Other Attachments:, Yes Rear Auxiliary Hydraulics, Thumb Type:, Hydraulic Thumb

CHASSIS

Boom Condition Rating	Good	Stick Condition Rating	Good
Stick Extension Wear Guides	Good	Boom Lock Rating	Good
Swing Tower Pivot Rating	Good	Boom Base Pin and Bushings Rating	Good
Pin and Bushings Boom to Stick Rating	Good	Pin and Bushings Stick to Coupler Rating	Good
Outriggers/Stabilizers	Street pads	Outriggers/Stabilizers Rating	Good

Limited Function Check (Chassis)

The main chassis components were operational in a limited check.

SPECIALTY

Loader Bucket Condition Rating	Good	Loader Bucket Cutting Edge/Shanks/Teeth	No visible damage or missing components
Loader Bucket Cutting Edge/Shanks/Teeth Rating	Good	Quick Attach	Operational, Hydraulic front coupler, Hydraulic coupler operational
Excavator Bucket Condition	Good	Bucket Edge	No visible damage or missing components
Rear Quick Coupler	Hydraulic coupler inoperable	Thumb Type	Hydraulic thumb

Thumb Rating

Good

TIRE SIZE: 340/80-18

12/₃₂

N/A

N/A

7/₃₂

N/A
N/A

N/A
N/A

TIRE SIZE: 440/80-28

30/₃₂

N/A

N/A

30/₃₂

N/A
N/A

N/A
N/A

RECONDITIONING

Body Panels - Left Engine Cover Damaged

\$750

Grille Damaged

\$1,500

Travel Alarm - Inop

\$200

Warning Lights - Warning Light On

\$2,500

Check Washer Fluid Message On

\$100

Air Conditioner - Inop

\$1,250

Bucket Cylinder - Leaking

\$950

Rear Quick Coupler - Hydraulic Coupler Inop

\$750

Total

\$8,000
