



Thomas Croce

ITEM DETAILS - Volvo L60H

Thursday, February 05, 2026

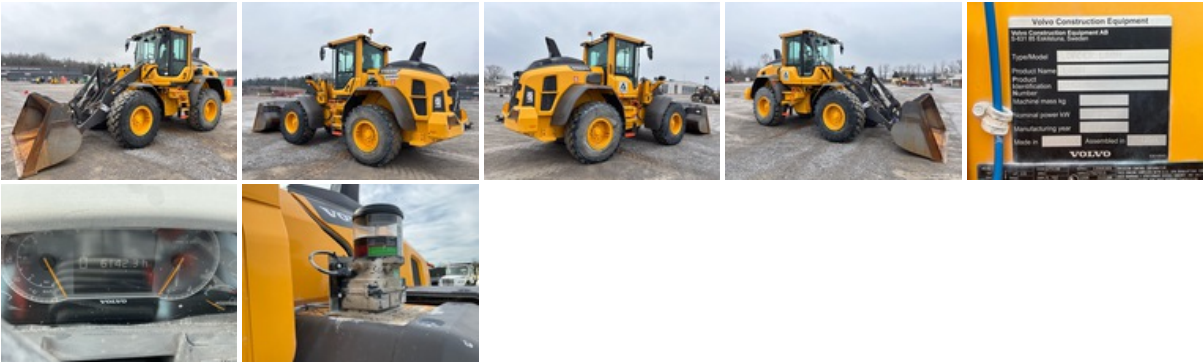
DETAILED EQUIPMENT INFORMATION

A qualified Ritchie Bros. employee collected detailed equipment information and performed functional tests on the key components of this asset.

General Appearance

Serial Number / VIN: VCE0L60HT0S623461  
Seller Reference Number: Seller Reference or Fleet Number:  
Tires/ Undercarriage: Percentage Rating:, 60

Hour Meter / Odometer: 6142 hrs  
Condition: Overall Condition for Age:, Good  
Features: Enclosed Cab, Air Conditioner, Rear View Camera, On-Board Scale, 2023 US EPA Label, Requires Diesel Exhaust Fluid, Hydraulic Coupler, 98 in Bucket, Auto Lube, 20.5R25 Tires



Control Station

Control Station: Cab Type, Enclosed Cab, Air Conditioner, Rear View Camera, On-Board Scale  
Limited Function Check: The main components are in place and operational as noted.



Engine

Engine: 2023 US EPA Label, Requires Diesel Exhaust Fluid  
Limited Function Check: The engine started and ran.



## Drivetrain

**Limited Function Check:** The drivetrain was operational.

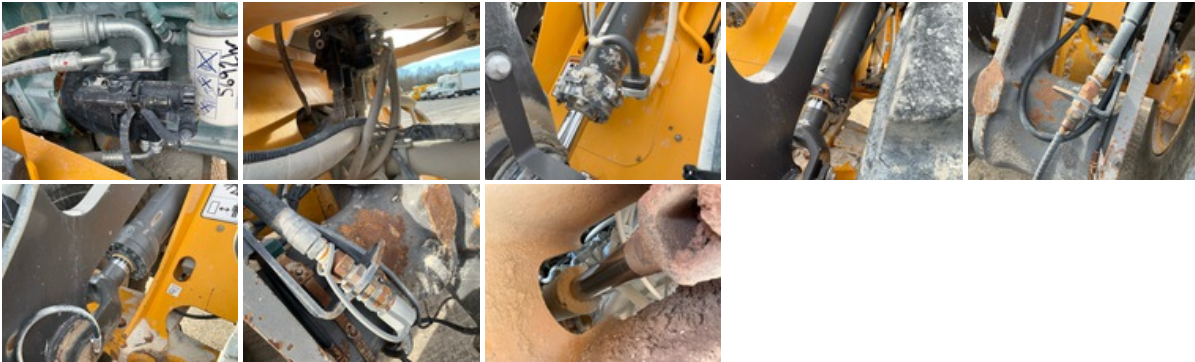


## Brakes

**Brakes:** The brakes are operational.

## Hydraulics

**Limited Function Check:** The hydraulic system was operational.



## Specialty

**Front Attachment:** Front Attachment Details, Quick Coupler Type: Hydraulic Coupler, 98 in Bucket Type: Bucket



## Chassis

**Body Options:** Auto Lube  
**Tires:** 20.5R25 Tires



---

### Logistics Information

**General Shipping Information:** Yes: Does this Unit Run? Yes: If self propelled, does the unit travel? No: Is the unit taller than 12'? No: Is the unit wider than 8'6"? Yes: Inflated Tires - item can roll? No: Noticeable fluid leaks?

---

## DISCLAIMER

### General

The Detailed Equipment Information is limited in scope, and Ritchie Bros. Auctioneers has not inspected any aspects or components of the equipment other than those expressly set forth herein. Unless expressly stated, we make no representations or warranties, express or implied, concerning the equipment or its components, including without limitation any representations or warranties concerning functionality, conformity or compliance with any safety standard or requirement of any applicable authority or regulatory body, fitness for any particular purpose, or merchantability. You are strongly advised to perform your own detailed inspection of the equipment prior to bidding.

### Functions

Equipment is not tested under load. We make no representation or warranty that equipment is operating in accordance with manufacturers' specifications. No inspection has been performed with respect to any functionality aspect other than those expressly included herein. Only select photos have been provided for individual undercarriage components, and may not be indicative of the condition of the entire undercarriage as a whole.

### Dimensions

Measurements are given as an estimate only. Actual loaded dimensions may vary based on truck/trailer height and the loaded machine configuration/position. It is the buyer's responsibility to measure all loads before leaving our auction site to ensure the load is safe for transport. All measurements should be verified by the buyer. DO NOT rely on these measurements for transportation purposes