

# CASE 3540

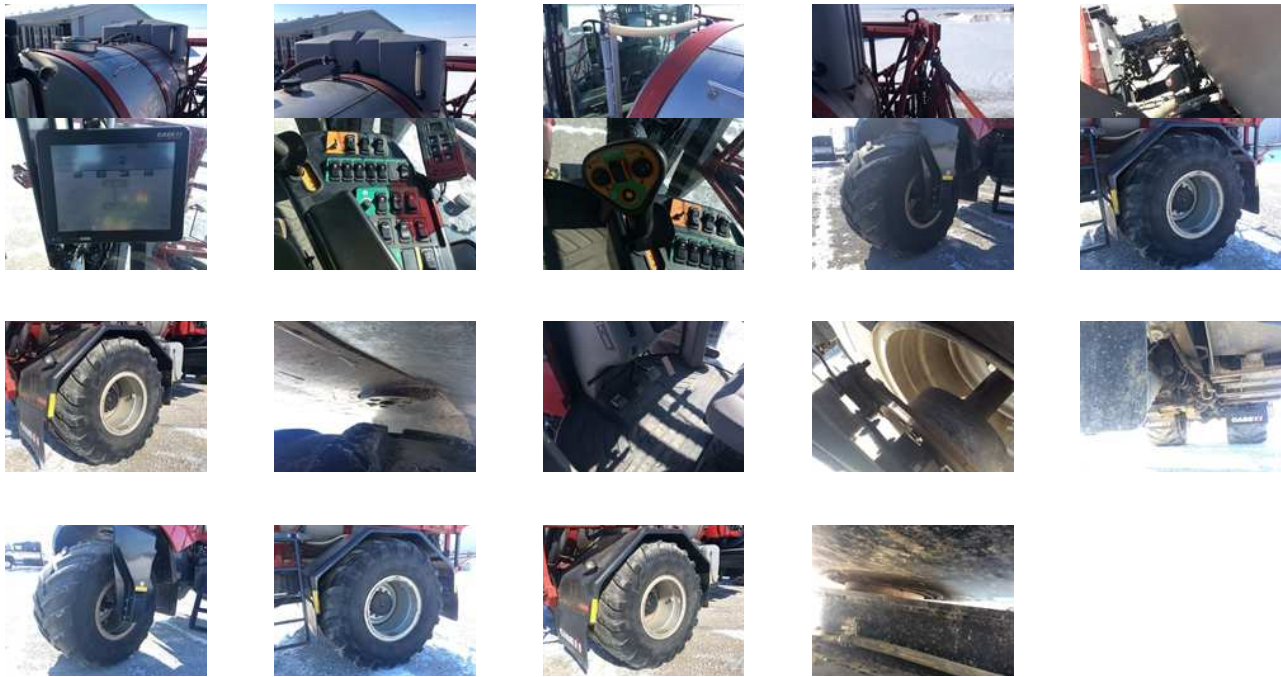
UNIT: YGT043064

[View Asset](#)









### GENERAL APPERANCE

<b>UID</b>	YGT043064	<b>Paint</b>	No visible damage
<b>Glass</b>	No visible damage or missing components	<b>Exterior Lights</b>	All lights operational
<b>Steps/Ladders</b>	Good	<b>Serial Number / VIN</b>	YGT043064

### CONTROL STATION SPRAYER

<b>Operator Station</b> 2955 Machine Hours Showing, Automatic, Air Conditioner, Air Ride Seat	<b>Precision Farming</b>	Raven Display
--	--------------------------	---------------

### SAFTEY

<b>Horn</b>	Operational	<b>Seat Belts</b>	Operational
-------------	-------------	-------------------	-------------

### CONTROL STATION

<b>Seats/Armrests</b>	No visible damage or missing components	<b>Hydraulic Controls</b>	Good
<b>Steering Control</b>	Good	<b>Drivetrain Controls</b>	Good
<b>Oil Pressure</b>	The gauge registers in the operating range.	<b>Warning Lights</b>	Operational
<b>Guages</b>	Operational	<b>Hour Meter/Odometer (Start)</b>	2955.6 hrs

**Hour Meter/Odometer** 2955 hrs

**Cab Heater** Operational

**Cab Air Conditioner**  
The ambient temperature is too cold to check

**Limited Function Check**  
The main components are in place and operational as noted.

## ENGINE

**Blow By** Visible

**Exhaust System**  
No visible damage or missing components

**Starter** Operational

**Radiator** Good

**Oil Leaks** No dripping leaks

## DRIVETRAIN

**Transmission** Good

**Limited Function Check** The drivetrain was operational.

**Rear Axle** Good

## HYDRAULICS

**Hydraulic Pump** Good

**Hydraulic Tank** Good

**Cylinder Pins and Bushings Condition** Good

**Hydraulic Motors** Not operationally checked

**Cylinders** Good

**Limited Function Check (Hydraulics)**  
The hydraulic system was operational.

## CHASSIS SPRAYER

**Body Details**  
Pump Type:, Hydraulic Driven Pump, 2000 L Tank Type:  
Stainless Steel Tank, Foam Markers, Rinse Tank, 5 Section  
Control

**Tank Saddle** Good

**Air System** Not operationally checked

**Controller Rating** Appears complete

**Booms and Boom Tree** Good

**Boom Shocks** Good

**Tank** Good

**Plumbing** Good

**Foam Marker** Not operationally checked

## CHASSIS RUBBER TIRE AG

**Steering Linkage** Good

**Limited Function Check (Brakes)**

**Park Brake** Good

**Frame Condition** Good

The brake system functioned, stopping and holding the machine.	<b>Wheel Condition</b>	Good
	<b>Wheel Studs, Nuts, Lugs</b>	Good

<b>TIRE SIZE:</b> 1050/50R32			
<u>38</u> <sub>/32</sub>	N/A	N/A	N/A
N/A N/A			N/A N/A
<b>TIRE SIZE:</b> 1050/50R32			
<u>28</u> <sub>/32</sub>	N/A	N/A	<u>24</u> <sub>/32</sub>
N/A N/A			N/A N/A

--

--

<b>RECONDITIONING</b>	
Paint Rusted/Damaged	\$500
<b>Total</b>	<b>\$500</b>

Too Cold to Test A/C
----------------------

--

---

## UNIT SPECS

---

Customer

Wells Fargo

**INSPECTION LOCATION**

**CURRENT LOCATION**

---

## VERSION HISTORY

---

02/09/2022

---