

ITEM DETAILS - 2016 Toyota 8FGCU15

Wednesday, September 04, 2024

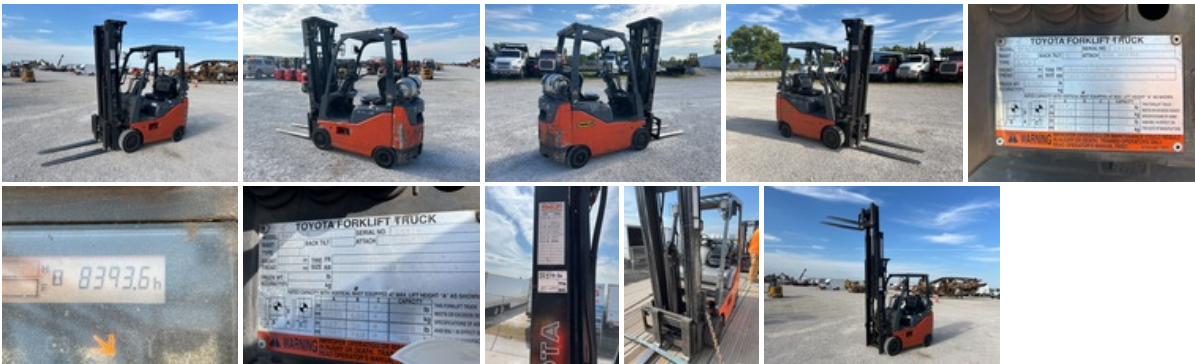
DETAILED EQUIPMENT INFORMATION

A qualified Ritchie Bros. employee collected detailed equipment information and performed functional tests on the key components of this asset.

General Appearance

Serial Number / VIN: 14416
Serial Number Location: Front Frame Driver Side
Seller Reference Number: Seller Reference or Fleet Number:
Tires/ Undercarriage: Percentage Rating: , 65
Hour Meter / Odometer: 8393 hrs

Condition: Overall Condition for Age: , Fair
Features: 3 Stage Mast, 217 in Max Lift Height, 90 in Lowered Mast Height, 42 in Forks, Side Shift, 2009 US EPA Label, Toyota 4YEC5 4 Cylinder 2.2 L LPG Engine



Model Description

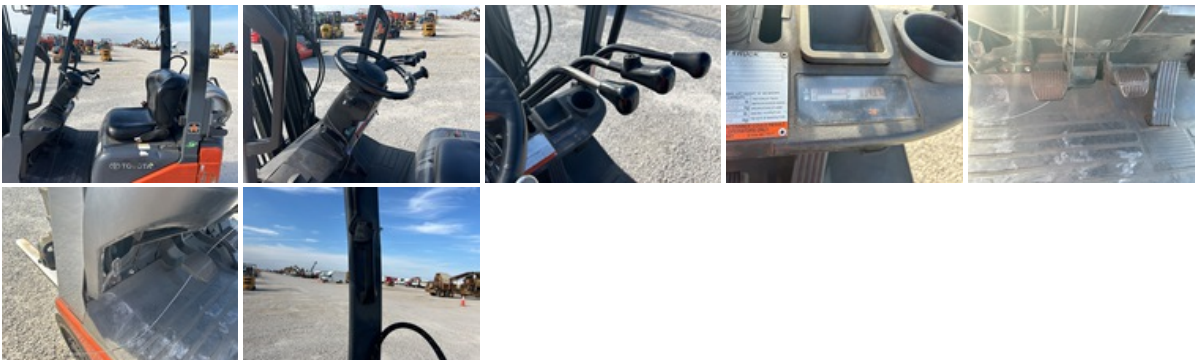
Model Description: 2300 lb

Features

Features: Lift Truck Details: , Number of Mast Stages: 3 Stage Mast, Max Lift Height: 217 in Max Lift Height, Lowered Mast Height: 90 in Lowered Mast Height, 42 in Forks, Side Shift

Control Station

Limited Function Check: The main components are in place and operational as noted.



Engine

Emissions Status: 2009 US EPA Label

Engine: Toyota 4YEC5 4 Cylinder 2.2 L LPG Engine

Limited Function Check: The engine started and ran.



Electrical

Electric: The electrical system was operational.



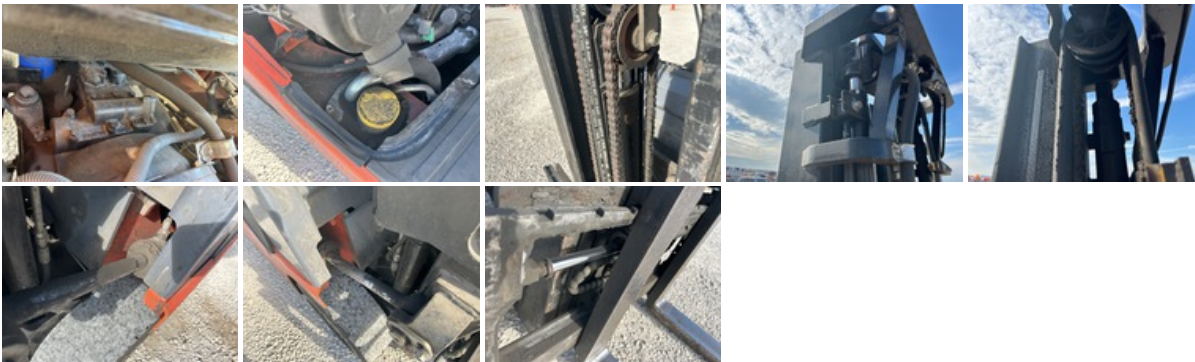
Drivetrain

Limited Function Check: The drivetrain was operational without a load.



Hydraulics

Limited Function Check: The hydraulic system was operational.



Chassis



Logistics Information

General Shipping Information: Yes: Does this Unit Run? Yes: If self propelled, does the unit travel? Yes: Inflated Tires - item can roll? No: Is the unit taller than 12'? No: Is the unit wider than 8'6"? No: Noticeable fluid leaks?

Road Related Shipping Info: Yes: Lights Operate? Yes: Brakes Operate? Yes: Tires OK?

DISCLAIMER

General

The Detailed Equipment Information is limited in scope, and Ritchie Bros. Auctioneers has not inspected any aspects or components of the equipment other than those expressly set forth herein. Unless expressly stated, we make no representations or warranties, express or implied, concerning the equipment or its components, including without limitation any representations or warranties concerning functionality, conformity or compliance with any safety standard or requirement of any applicable authority or regulatory body, fitness for any particular purpose, or merchantability. You are strongly advised to perform your own detailed inspection of the equipment prior to bidding.

Functions

Equipment is not tested under load. We make no representation or warranty that equipment is operating in accordance with manufacturers' specifications. No inspection has been performed with respect to any functionality aspect other than those expressly included herein. Only select photos have been provided for individual undercarriage components, and may not be indicative of the condition of the entire undercarriage as a whole.

Dimensions

Measurements are given as an estimate only. Actual loaded dimensions may vary based on truck/trailer height and the loaded machine configuration/position. It is the buyer's responsibility to measure all loads before leaving our auction site to ensure the load is safe for transport. All measurements should be verified by the buyer. DO NOT rely on these measurements for transportation purposes