

Equipment Reports

[Home](#) [Approve Work Order](#)

Approve Work Order

Work Order ID: WQAQ8D9

Status: Recommended

Expiry date: Sep 24, 2025

Owner Code: B75



2018 JLG 1055 TFL
S/N: 0160089172
Usage: 6364 Hrs

Auction: MARS NAS - Columbus,
OH, USA

Owner Eq ID:
In Yard: Yes Mar 19, 2025
Lot #: 0

Note from Yard Staff by [Brian Newman - Assistant Yard Manager](#) on Mar 28, 2025
1 item(s) added Unit is turn key at this time.

Note to Approver by [Wade Whitenburg - Strategic Account Manager](#) on Mar 28, 2025
1 item(s) recommended and 0 not recommended Agree

Work Details

Detailed Equipment Information



[Download All Photos](#)

2018 JLG 1055 / TFL

- [General Appearance](#)
- [Engine](#)
- [Hydraulics](#)
- [Control Station](#)
- [Drivetrain](#)
- [Chassis](#)
- [Logistics Information](#)

GENERAL APPEARANCE

[Back To Top](#)

SERIAL NUMBER / VIN	0160089172	
SELLER REFERENCE NUMBER	Seller Reference or Fleet Number:	
TIRES/ UNDERCARRIAGE	Percentage Rating:, 70%	
HOUR METER / ODOMETER	6364 hrs	
CONDITION	Overall Condition for Age:, Good	
FEATURES	Enclosed Cab, Air Conditioner, 55 ft Max Lift Height, 10000 lb Max Lift Capacity, 2018 US EPA Label, Requires Diesel Exhaust Fluid, 60	

in Forks, Tilt Carriage, Outriggers, Auxiliary
Hydraulic Plumbing, 400/75-28 Tires



1 of 7



Photo 1

Photo 2

Photo 3

CONTROL STATION

[Back To Top](#)

CONTROL STATION

Enclosed Cab, Air Conditioner, 55 ft Max Lift
Height, 10000 lb Max Lift Capacity

LIMITED FUNCTION CHECK

The main components are in place and
operational as noted.



1 of 10



Photo 1

Photo 2

Photo 3

ENGINE

[Back To Top](#)

ENGINE

2018 US EPA Label, Requires Diesel Exhaust
Fluid

LIMITED FUNCTION CHECK

The engine started and ran.

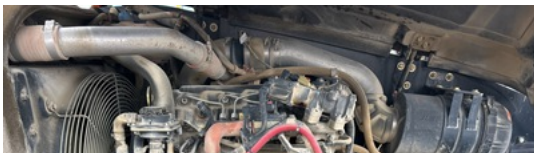




Photo 1



Photo 2



Photo 3

DRIVETRAIN

[Back To Top](#)

LIMITED FUNCTION CHECK The drivetrain was operational.



Photo 1



Photo 2



Photo 3

HYDRAULICS

[Back To Top](#)

LIMITED FUNCTION CHECK The hydraulic system was operational.



Photo 1



Photo 2



Photo 3

CHASSIS

[Back To Top](#)

CHASSIS

60 in Forks, Tilt Carriage, Outriggers,
Auxiliary Hydraulic Plumbing

TIRES

400/75-28 Tires



1 of 26



Photo 1

Photo 2

Photo 3

LOGISTICS INFORMATION

[Back To Top](#)

GENERAL SHIPPING INFORMATION

Yes: Does this Unit Run? Yes: If self propelled, does the unit travel? Yes: Inflated Tires - item can roll? No: Is the unit taller than 12'? No: Is the unit wider than 8'6"? No: Noticeable fluid leaks?

ROAD RELATED SHIPPING INFO

The lights and brakes were not operationally checked, Yes: Brakes Operate? Yes: Tires OK?

DISCLAIMER

General

The Detailed Equipment Information is limited in scope, and Ritchie Bros. Auctioneers has not inspected any aspects or components of the equipment other than those expressly set forth herein. Unless expressly stated, we make no representations or warranties, express or implied, concerning the equipment or its components, including without limitation any representations or warranties concerning functionality, conformity or compliance with any safety standard or requirement of any applicable authority or regulatory body, fitness for any particular purpose, or merchantability. You are strongly advised to perform your own detailed inspection of the equipment prior to bidding.

Functions

Equipment is not tested under load. We make no representation or warranty that equipment is operating in accordance with manufacturers' specifications. No inspection has been performed with respect to any functionality aspect other than those expressly included herein. Only select photos have been provided for individual undercarriage components, and may not be indicative of the condition of the entire undercarriage as a whole.

Dimensions

Measurements are given as an estimate only. Actual loaded dimensions may vary based on truck/trailer height and the loaded machine configuration/position. It is the buyer's responsibility to measure all loads before leaving our auction site to ensure the load is safe for transport. All measurements should be verified by the buyer. DO NOT rely on these measurements for transportation purposes