

## ITEM DETAILS - Doosan

Friday, August 30, 2024

### DETAILED EQUIPMENT INFORMATION

A qualified Ritchie Bros. employee collected detailed equipment information and performed functional tests on the key components of this asset.

#### General Appearance

Serial Number / VIN: FBA11381007043

Seller Reference Number: Seller Reference or Fleet Number:

Tires/ Undercarriage: Percentage Rating:

Hour Meter / Odometer: 1610 hrs

Condition: Overall Condition for Age:, Fair

Features: 3 Stage Mast, 187 in Max Lift Height, 83 in Lowered Mast Height, 47 in Forks, Side Shift, 36 V



#### Model Description

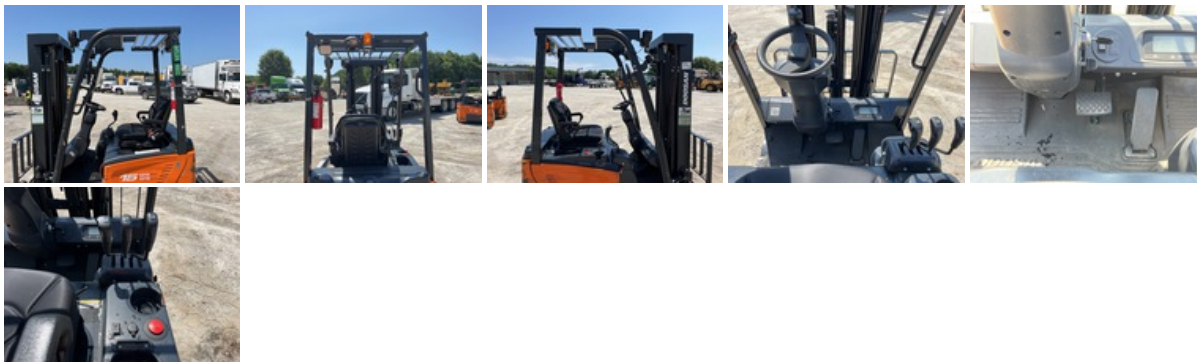
Model Description: 2600 lb

#### Features

Features: Lift Truck Details:, Number of Mast Stages: 3 Stage Mast, Max Lift Height: 187 in Max Lift Height, Lowered Mast Height: 83 in Lowered Mast Height, 47 in Forks, Side Shift, Electric Powered, 36 V

#### Control Station

Limited Function Check: The main components are in place and operational as noted.



#### Electrical

Electric: The electrical system was operational.



---

### Drivetrain

Limited Function Check: The drivetrain was operational without a load.



---

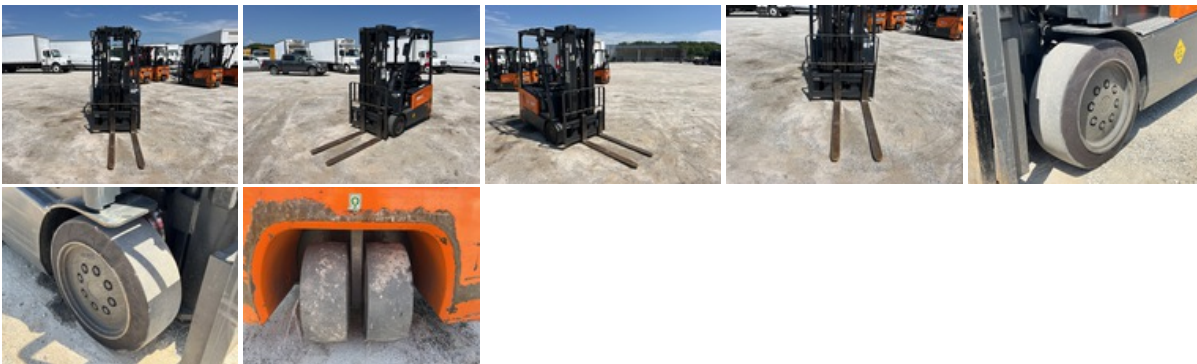
### Hydraulics

Limited Function Check: The hydraulic system was operational.



---

### Chassis



## DISCLAIMER

### General

The Detailed Equipment Information is limited in scope, and Ritchie Bros. Auctioneers has not inspected any aspects or components of the equipment other than those expressly set forth herein. Unless expressly stated, we make no representations or warranties, express or implied, concerning the equipment or its components, including without limitation any representations or warranties concerning functionality, conformity or compliance with any safety standard or requirement of any applicable authority or regulatory body, fitness for any particular purpose, or merchantability. You are strongly advised to perform your own detailed inspection of the equipment prior to bidding.

### Functions

Equipment is not tested under load. We make no representation or warranty that equipment is operating in accordance with manufacturers' specifications. No inspection has been performed with respect to any functionality aspect other than those expressly included herein. Only select photos have been provided for individual undercarriage components, and may not be indicative of the condition of the entire undercarriage as a whole.

### Dimensions

Measurements are given as an estimate only. Actual loaded dimensions may vary based on truck/trailer height and the loaded machine configuration/position. It is the buyer's responsibility to measure all loads before leaving our auction site to ensure the load is safe for transport. All measurements should be verified by the buyer. DO NOT rely on these measurements for transportation purposes