









C25

HELI

TRITCHE BROS.



45DS-7

C25

fb RITCHIE BROS
Auctioneers



CAUTION



Always use proper tie-off technique and use proper fall protection when working at heights.

AT RITCHIE BROS.



CAUTION

Read the Operator's Manual before operating this machine.





ING



6-00-9

© 2014 Hyster



LIUGONG

GLADIS

3105

for sale







FORKTRUCKS







HUOSHANGUN* SAE 100 R17-06 WP 210bar

HUOSHANGUN* SAE 100 R17-06 WP 210bar JILIN

HUOSHANGUN* SAE 100 R17-06 WP 210bar JILIN

HUOSHANGUN* SAE 100 R17-06 WP 210bar JILIN

HUOSHANGUN* SAE 100 R17-06 WP 210bar JILIN

HUOSHANGUN* SAE 100 R17-06 WP 210bar JILIN

HUOSHANGUN* SAE 100 R17-06 WP 210bar JILIN

HUOSHANGUN* SAE 100 R17-06 WP 210bar JILIN

HUOSHANGUN* SAE 100 R17-06 WP 210bar JILIN

HUOSHANGUN* SAE 100 R17-06 WP 210bar JILIN

HUOSHANGUN* SAE 100 R17-06 WP 210bar JILIN

HUOSHANGUN* SAE 100 R17-06 WP 210bar JILIN

HUOSHANGUN* SAE 100 R17-06 WP 210bar JILIN

HUOSHANGUN* SAE 100 R17-06 WP 210bar JILIN

HUOSHANGUN* SAE 100 R17-06 WP 210bar JILIN

HUOSHANGUN* SAE 100 R17-06 WP 210bar JILIN

HUOSHANGUN* SAE 100 R17-06 WP 210bar JILIN

HUOSHANGUN* SAE 100 R17-06 WP 210bar JILIN

HUOSHANGUN* SAE 100 R17-06 WP 210bar JILIN

HUOSHANGUN* SAE 100 R17-06 WP 210bar JILIN

HUOSHANGUN* SAE 100 R17-06 WP 210bar JILIN

HUOSHANGUN* SAE 100 R17-06 WP 210bar JILIN

HUOSHANGUN* SAE 100 R17-06 WP 210bar JILIN

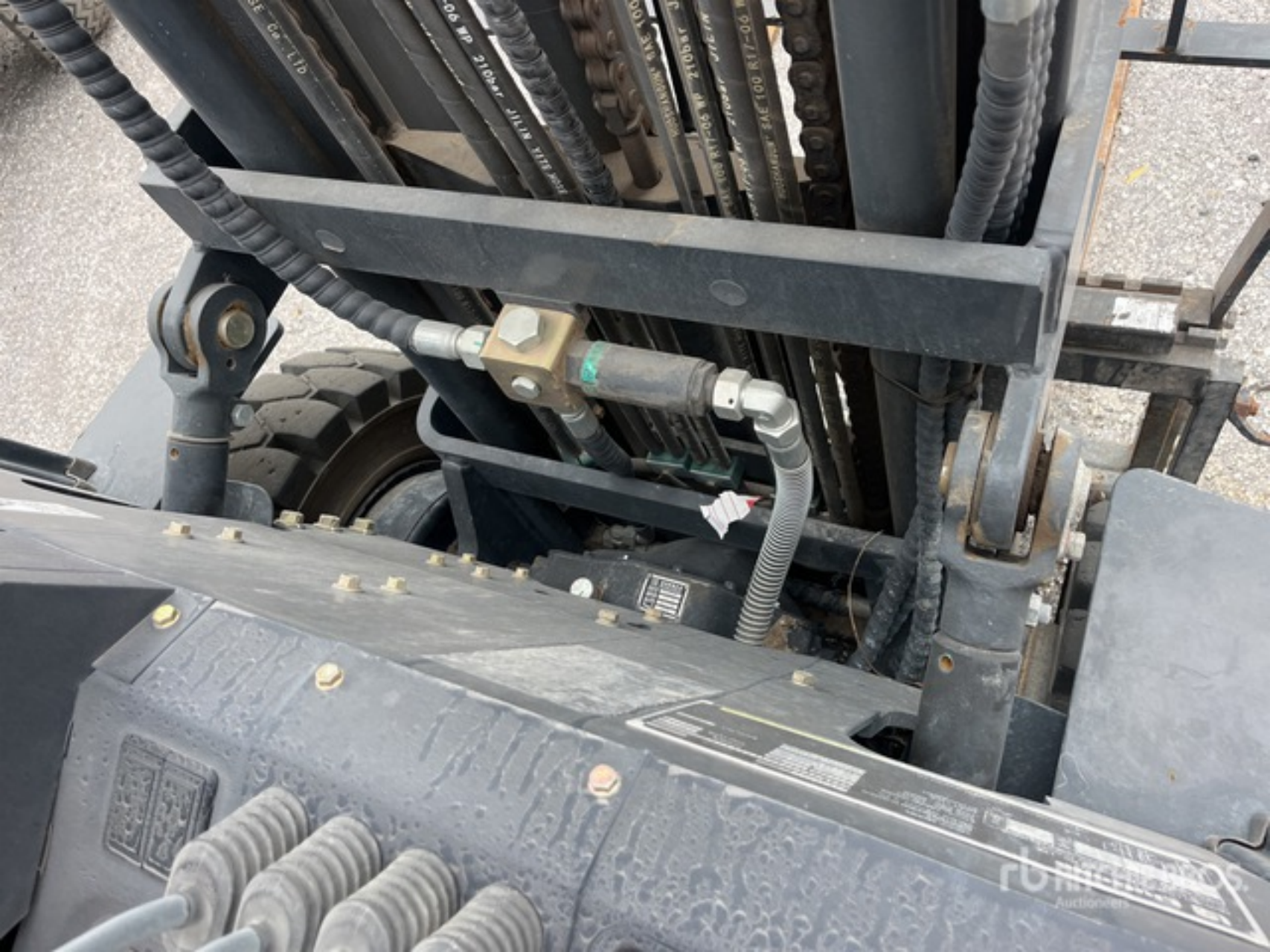
HUOSHANGUN* SAE 100 R17-06 WP 210bar JILIN

HUOSHANGUN* SAE 100 R17-06 WP 210bar JILIN

HUOSHANGUN* SAE 100 R17-06 WP 210bar JILIN

HUOSHANGUN* SAE 100 R17-06 WP 210bar JILIN





rb
Auctioneers



rb BRITCHE BROS.
Auctioneers



Always lock
adjusting lever
after adjustment
of steering
console.

FITCHIE BROS.
EQUIPMENT



© 2014 Hyster



LIUGONG

N H 905.2h

0.0mph

2024-10-17 Thursday 11:39

F1

F2

MODE



MISSION CONTROL INFORMATION



THIS ENGINE MEETS 2022 U.S. EPA REGULATIONS FOR
NONROAD AND STATIONARY SI ENGINES; AND CALIFORNIA
REGULATIONS FOR OFF-ROAD-LARGE SI ENGINES.

Kubota KUBOTA Corporation [DEL. ASSY]

MODEL: WG2503-L-ET FAMILY: NKBXB02.5HEA
ENGINE DISP.: 2.5L ECS: EM, ECM, MIX, TWC, HO2S
CERTIFIED EMISSION STD: 0.8g/kW-hr HC+NOx
20.6g/kW-hr CO

THIS ENGINE IS CERTIFIED TO OPERATE ON COMMERCIAL
PROPANE GAS.

VALVE LASH: 0.20mm SPARK PLUG GAP WIDTH: 0.8mm
NO OTHER ADJUSTMENTS NEEDED. 2022/06 | 1H992-2

Kubota
WG2503



Serial No.: 7NM1354

Code No.: EG542-22000

MADE IN JAPAN



45DS-7

JLG

JLG





Guangxi Liugong Machinery Co., Ltd.
No.1 Liutai Road, Liuzhou, Guangxi 545007, PR China

RATED CAPACITY WITH MAST VERTICAL AT MAX. LIFT HEIGHT "A"

A	B	C		CAPACITY	
4700	600	0	mm	2023	kg
			in	4450	lb
185	24	0	mm		kg
			in		lb



THIS INDUSTRIAL TRUCK CONFORMS TO ANSIS/ISO 9001

TRUCK MODEL
PRODUCT IDENTIFICATION NUMBER
TRUCK WEIGHT $\pm 3\%$
FRONT TREAD WIDTH
TIRE SIZE - FRONT
TIRE SIZE - REAR
MAST TYPE
ATTACHMENT

CLG2025	OPTION	
CLG2025	POWER	
kg	lb	
960 mm	37.8 in	TIRE TYPE
		BACK TILT

THIS INDUSTRIAL TRUCK CONFORMS TO ANSIS/ISO 9001
MAY RESULT IN INJURY OR DEATH. REFER TO OPERATOR'S MANUAL.

 LIUGONG

N H  905.2h



0.0mph

2024-10-17 Thursday 1 40

F1

F2

 rb 



PO RYTO JE BRÓS