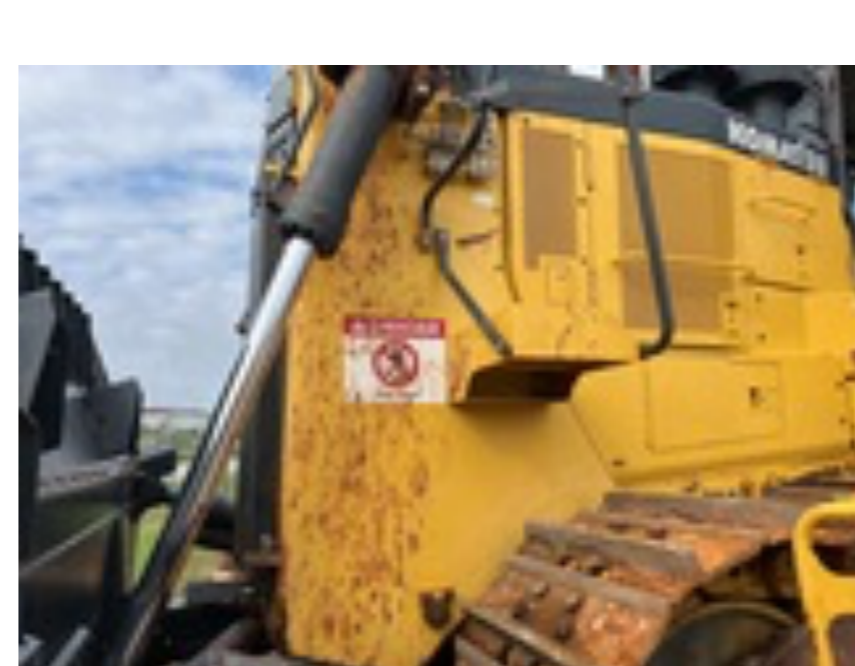


# 2018 Komatsu D375A-8

Unit: KMT00134EH080010



Download Reconditioning Printout

## UNIT SPECS

Customer Wells Fargo (MS)

## LOCATION

WELLS FARGO (MS)  
PLEASE CALL PICKUP SUPPORT FOR LOCATION INFORMATION  
LAKE WORTH, TX 76155

VIEW ALL PHOTOS

FULL SPECS RECONDITIONING

### General Appearance

<b>Year</b>	2018
<b>Make</b>	Komatsu
<b>Model</b>	D375A-8
<b>Pre-Operational Checks</b>	Confirm Fluids Checked: Engine Coolant, Confirm Fluids Checked: Engine(s) Oil, Confirm Fluids Checked: Transmission Fluid, Confirm Fluids Checked: Hydraulic Fluid, Confirm Fluids Checked: Fuel Level
<b>Paint</b>	No visible damage
<b>Body Panels</b>	Grille damaged
<b>Cab/Canopy Overhead Structural Framework</b>	No visible damage
<b>Steps/Ladders</b>	Right frame step damaged
<b>Hand Rails</b>	Right front hand rail bent
<b>Exterior Lights</b>	Inoperable / damaged / missing
<b>Serial</b>	KMT00134EH080010
<b>Serial Number / VIN</b>	KMT00134EH080010

### Safety

<b>Travel Alarm</b>	Operational
<b>Horn</b>	Operational
<b>Seat Belts</b>	Operational
<b>Safety Lock Out/Stop</b>	Operational
<b>Current Safety Manual</b>	No
<b>Current Operator/Maintenance Manual</b>	Yes

### Control Station

<b>Seat/Armrests</b>	No visible damage or missing components
<b>Glass</b>	No visible damage or missing components
<b>Cab Doors</b>	No visible damage or missing components
<b>Steering Controls</b>	Rating: Good
<b>Hydraulic Controls</b>	Rating: Good
<b>Drivetrain Controls</b>	Rating: Good
<b>Dash Console</b>	Rating: Good
<b>Engine Oil Pressure</b>	The fault indicator shuts off after the engine oil pressure rises.
<b>Warning Lights</b>	Operational
<b>Gauges</b>	Operational
<b>Rear View Camera</b>	Camera operates as intended
<b>Hour Meter (Pre-inspection)</b>	9398 hrs
<b>Hour Meter</b>	9398 hrs
<b>Air Conditioner</b>	The ambient temperature is too cold to check
<b>Heater</b>	Operational
<b>Limited Function Check (Control Station)</b>	The main components are in place and operational as noted. Would not restart without jump
<b>Control Station</b>	Enclosed Cab, Air Conditioner, Air Ride Seat

### Engine

<b>A/C Compressor</b>	Operational
<b>Starter</b>	Operational
<b>Exhaust System</b>	No visible damage or missing components
<b>Radiator</b>	Rating: Good
<b>Oil Leaks</b>	No dripping leaks
<b>Fuel Leaks</b>	No dripping leaks
<b>Cooling System Leaks</b>	No dripping leaks
<b>Limited Function Check (Engine)</b>	The engine started and ran.
<b>Engine</b>	No US EPA Label Present

### Drivetrain

<b>Transmission</b>	Operational
<b>Service Brakes</b>	Rating: Good
<b>Drive Motors</b>	Rating: Good
<b>Final Drives</b>	Rating: Good
<b>Limited Function Check (Drivetrain/Track)</b>	The drivetrain was operational without a load.

### Hydraulics

<b>Pumps (Hydraulics)</b>	Rating: Good
<b>Valves</b>	Not visible
<b>Hydraulic Tank</b>	Rating: Good
<b>Hoses (Hydraulics)</b>	Rating: Good
<b>Blade Tilt Cylinders</b>	Rating: Good
<b>Ripper Cylinders</b>	Rating: Good
<b>Limited Function Check (Hydraulics)</b>	The hydraulic system was operational.

### Chassis

<b>Frame Condition</b>	Rating: Good
<b>Belly Pans</b>	Rating: Good
<b>Push Arm/C-Frame Condition</b>	Rating: Good
<b>Tilt Linkage Pins And Bushings</b>	Rating: Good
<b>Blade Trunnions/Bushings</b>	Covered
<b>Limited Function Check (Dozer)</b>	The main components were operational in a limited check.
<b>Blade Condition</b>	Rating: Good
<b>Ripper Condition</b>	Rating: Good
<b>Body Options</b>	Auto Lube, Fast Fuel System
<b>Front Attachment</b>	184 in Wide Semi-U Blade Komatsu

### Specialty

**Rear Attachment**  
Number of Ripper Cylinders: 4 Cylinder Ripper Type: Single-Shank Ripper w/Hydraulic Pin Puller

### Undercarriage

<b>Track Link Brand</b>	HTS 816
<b>Left Roller Frame</b>	Rating: Good
<b>Left Track Tensioner</b>	Covered
<b>Left Track Pads</b>	32 in Wide Single Grouser
<b>Left Grouser Height</b>	71 mm
<b>Left Track Links</b>	180 mm
<b>Left Track Bushings</b>	97 mm
<b>Left Carrier Rollers</b>	2 carrier rollers #1210 mm #2 210 mm
<b>Left Bottom Rollers</b>	8 Bottom Rollers Covered
<b>Left Idler</b>	31 mm is rubbing on something
<b>Left Sprocket</b>	Rating: Good
<b>Right Roller Frame</b>	Rating: Good
<b>Right Track Tensioner</b>	Covered
<b>Right Track Pads</b>	32 in Wide Single Grouser
<b>Right Grouser Height</b>	71 mm
<b>Right Track Links</b>	180 mm
<b>Right Track Bushings</b>	97 mm
<b>Right Carrier Rollers</b>	2 Carrier Rollers #1 210 mm #2 210 mm
<b>Right Bottom Rollers</b>	8 Bottom Rollers Covered
<b>Right Idler</b>	35 mm is rubbing on something
<b>Right Sprocket</b>	Rating: Good

### Logistics Information

**Shipping Dimensions**  
34 ft 6 in Long x 15 ft 4 in Wide x 14 ft 6 in Tall

**General Shipping Information**  
Yes: Does this Unit Run? Yes: Is self propelled, does the unit travel? Yes: Is the unit taller than 12'? Yes: Is the unit wider than 8'6"? Yes: Inflated Tires - item can roll? No: Noticeable fluid leaks?