



rbmcranes.com









MANITOU





**WARNING**  
No riders!



**WARNING**  
Read and understand the operator's manual before operating the machine.





Photo: [fleetbase.com](https://www.fleetbase.com)









fb RITCHIEBROS













MA-126





170  
10/10/10













451550225

MH

RITCHIE BROS.  
Auctioneers









04655-759

cbirincourses





MHT 790

iV



fb. RITCHIE BROS.  
Auctioneers





**fb** RITCHIE BROS.  
Auctioneers





123456789



F1

F2

F3

F4

F5



F6

F7

F8

F9

F10



Esc







PO RITCHIE BROS.  
Autonomous

















MANITOU

FLORITCHE BROS.

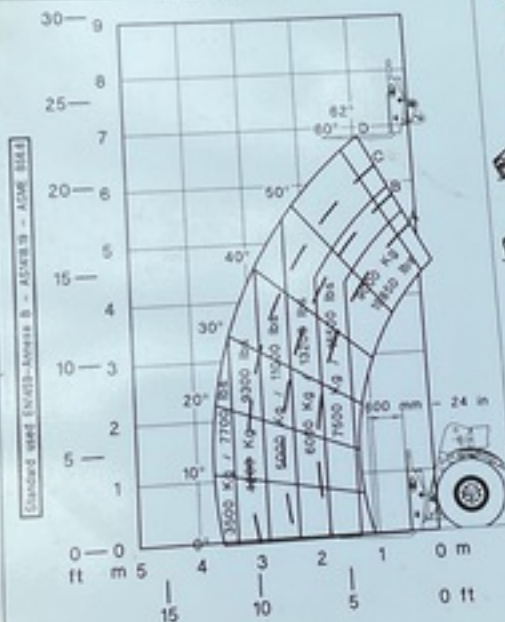


MHT 790

**MANITOU**

MHT 790

FORKS L.C. 600mm/24in



36 Km/ Max  
(20 m/h)



1.75% Max



1.75% Max



1.75% Max 1.75% Max



Ground conditions  
solid surface



0km/h

53004679









PO RINCHIE BROS.  
Auto Centers





Belt- 8PK1971  
32227 051  
PM 3/24/23 3294  
14 QRTS  
MHT 790

MHT 790

fb RITCHIE BROS  
Auctioneers



**TO BE REMOVED BEFORE FINAL SALE**

These engines with US EPA and California regulations for 2010 nonroad engines and EPA regulations for stationary diesel engines. DEL ASSY  
J10X104 5315 D100 4.5L ECS 1GR DC 9CR6 WKDC DFI TC CAC ECM  
Engine Model 4040MBC05A,B  
EPA Power Category: 56 - 130 kW ULTRA-LOW SULFUR FUEL ONLY  
E2 No. 411-STR00A-291216-2944-01 Europe Family No. J200104 5305

**PEEL HERE**

8064319 Mfg Date: 2018.02

For Engine Service and Parts -- [www.JohnDeere.com/dealer](http://www.JohnDeere.com/dealer)

**TO BE REMOVED BEFORE FINAL SALE**

**IMPORTANT ENGINE INFORMATION**  
KOREA APPROVAL

80 / 4040MBC05A / 7.56N JD'02


**PEEL HERE**

 R562119

For Engine Service and Parts -- [www.JohnDeere.com/dealer](http://www.JohnDeere.com/dealer)

**JOHN DEERE** **IMPORTANT ENGINE INFORMATION**  
DEERE & COMPANY

Warranty will not apply to engine and drivetrain failures resulting from unauthorized adjustments to this engine. Unauthorized adjustments are in violation of the emission regulations applicable to this engine and may result in substantial fines and penalties.

 8023929 150901 Registered

For Engine Service and Parts Call 1-800-JD-ENGINE









**FB RITCHIEBROS.**  
Pioneers









rbensien



 **MANITOU**

MANITOU NORTH AMERICA, LLC WEST BEND, WI 53095

MODEL MODELO  
MODELE

MH1790 S14 S1

Serial No. Numéro de série  
N° de série

MAN0000000000000000

Year and country of manufacture  
Année et pays de fabrication  
Año y el país de fabricación

2018 ITALIA

Unladen mass Masse à vide  
Massa en vacío

28000 kg

Tire pressure Pression des pneumatiques  
Presión de los neumáticosFront Avant  
143/10 Psi/Bar

Delantero

Rear Arrière  
118 Psi/Bar

Trasero

For capacities, refer to appropriate lift chart or contact the factory.  
Pour les capacités de levage, se référer au bon abaques de charge ou  
contacter l'usine.  
Para capacidades, mire la tabla de elevamiento apropiada o contacte  
la fábrica.  
As released from the factory, this truck conforms to design standards  
as shown on sheets and conforms aux normes de conception  
données sur les feuilles de la fabrication.  
Como sale de la fábrica, este camion se ajusta a las normas de diseño

N° 51302303

ANSI/ASME

FOR RITCHIE BROS.





80

40

0



 P 2050.6  
T 3947.7

T  
D 116

Park brake engaged





































MAHLE