

ITEM DETAILS - Cat 982M

Monday, June 17, 2024

DETAILED EQUIPMENT INFORMATION

A qualified Ritchie Bros. employee collected detailed equipment information and performed functional tests on the key components of this asset.

General Appearance

Serial Number / VIN: CAT0982MAXDL00747

Seller Reference Number: Seller Reference or Fleet Number:

Tires/ Undercarriage: Percentage Rating:, 70%

Hour Meter / Odometer: 5748 hrs

Condition: Overall Condition for Age:, Good

Features: Enclosed Cab, Air Conditioner, Air Ride Seat, Joystick Steering, Fire Suppression System, Requires Diesel Exhaust Fluid, 140 in Bucket, Auto Lube, 875/65R29 Tires



Control Station

Control Station: Cab Type, Enclosed Cab, Air Conditioner, Air Ride Seat, Joystick Steering, Fire Suppression System

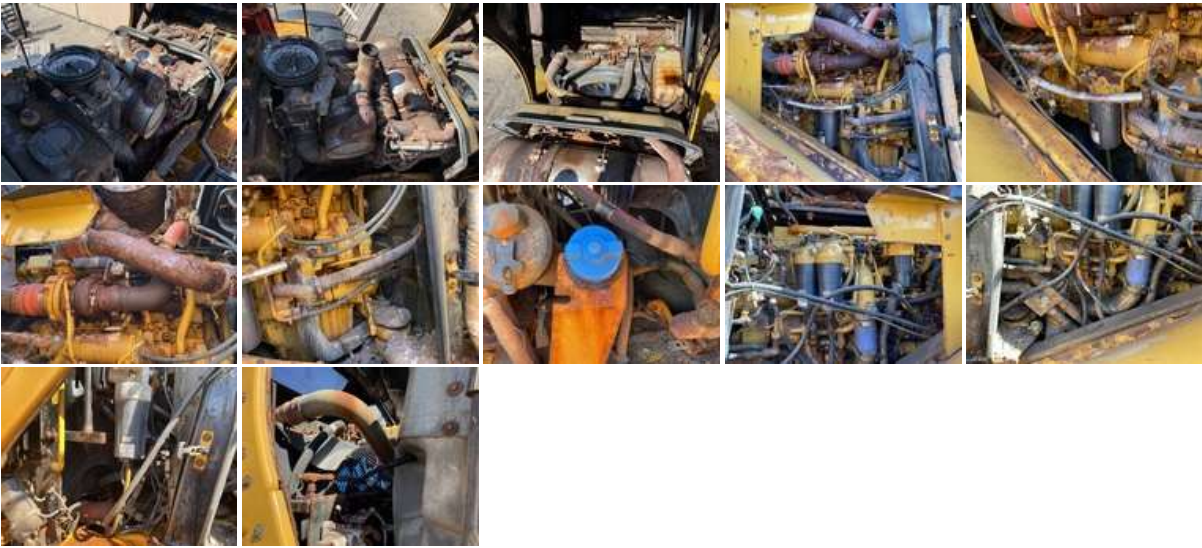
Limited Function Check: The main components are in place and operational as noted.



Engine

Engine: No US EPA Label Present Requires Diesel Exhaust Fluid

Limited Function Check: The engine started and ran.



Drivetrain

Limited Function Check: The drivetrain was operational without a load.



Brakes

Brakes: The brakes are operational.

Hydraulics

Limited Function Check: The hydraulic system was operational.





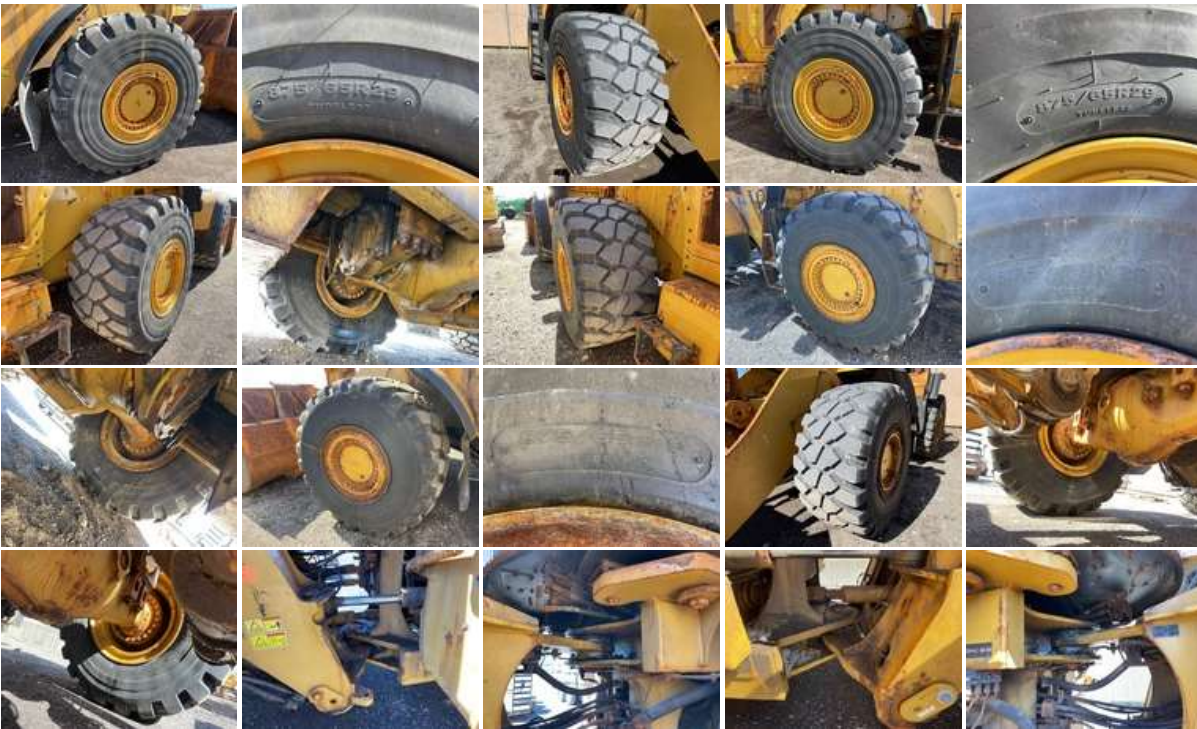
Specialty

Front Attachment: Front Attachment Details, 140 in Bucket Type: Bucket



Chassis

Body Options: Auto Lube
Tires: 875/65R29 Tires



Deficiencies

Deficiencies: Deficient Components/Systems Include
but are not limited to: Lot of surface rust on Machine

Logistics Information

General Shipping Information: Yes: Does this Unit Run? Yes: If self propelled, does the unit travel? Yes: Is the unit taller than 12'? Yes: Is the unit wider than 8'6"? Yes: Inflated Tires - item can roll? No: Noticeable fluid leaks?

Road Related Shipping Info: The lights and brakes were not operationally checked, Yes: Brakes Operate? Yes: Tires OK?

DISCLAIMER

General

The Detailed Equipment Information is limited in scope, and Ritchie Bros. Auctioneers has not inspected any aspects or components of the equipment other than those expressly set forth herein. Unless expressly stated, we make no representations or warranties, express or implied, concerning the equipment or its components, including without limitation any representations or warranties concerning functionality, conformity or compliance with any safety standard or requirement of any applicable authority or regulatory body, fitness for any particular purpose, or merchantability. You are strongly advised to perform your own detailed inspection of the equipment prior to bidding.

Functions

Equipment is not tested under load. We make no representation or warranty that equipment is operating in accordance with manufacturers' specifications. No inspection has been performed with respect to any functionality aspect other than those expressly included herein. Only select photos have been provided for individual undercarriage components, and may not be indicative of the condition of the entire undercarriage as a whole.

Dimensions

Measurements are given as an estimate only. Actual loaded dimensions may vary based on truck/trailer height and the loaded machine configuration/position. It is the buyer's responsibility to measure all loads before leaving our auction site to ensure the load is safe for transport. All measurements should be verified by the buyer. DO NOT rely on these measurements for transportation purposes