

ITEM DETAILS - 2019 Doosan G55C-7

Wednesday, November 13, 2024

DETAILED EQUIPMENT INFORMATION

A qualified Ritchie Bros. employee collected detailed equipment information and performed functional tests on the key components of this asset.

General Appearance

Serial Number Location: Front Frame Driver Side

CE Mark: No CE mark found

Seller Reference Number: Seller Reference or Fleet Number:

Tires/ Undercarriage: Percentage Rating:, 70

Serial Number / VIN: FGB0V256000123

Condition: Overall Condition for Age:, Fair

Hour Meter / Odometer: 7142 hrs

Features: 3 Stage Mast, 162 in Max Lift Height, 84 in Lowered Mast Height, 58 in Forks, Side Shift, Fork Positioner, Solid Pneumatic Tires, V6 LPG Engine



Model Description

Model Description: 11100 lb

Features

Features: Lift Truck Details:, Number of Mast Stages: 3 Stage Mast, Max Lift Height: 162 in Max Lift Height, Lowered Mast Height: 84 in Lowered Mast Height, 58 in Forks, Side Shift, Fork Positioner, Solid Pneumatic Tires

Control Station

Limited Function Check: The main components are in place and operational as noted.

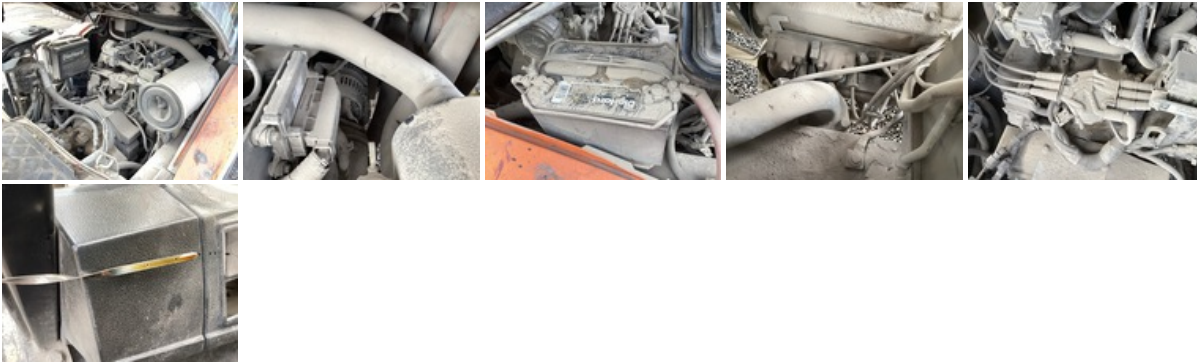


Engine

Emissions Status: No US EPA Label Present

Engine: V6 LPG Engine

Limited Function Check: The engine started and ran.

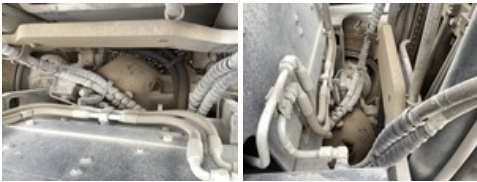


Electrical

Limited Function Check: The electrical system was operational.

Drivetrain

Limited Function Check: The drivetrain was operational.



Hydraulics

Limited Function Check: The hydraulic system was operational.



Chassis





Logistics Information

Shipping Dimensions: 16 ft 1 in Long x 4 ft 5 in Wide x 7 ft 1 in Tall

Road Related Shipping Info: The lights and brakes were not operationally checked, Yes: Tires OK?

DISCLAIMER

General

The Detailed Equipment Information is limited in scope, and Ritchie Bros. Auctioneers has not inspected any aspects or components of the equipment other than those expressly set forth herein. Unless expressly stated, we make no representations or warranties, express or implied, concerning the equipment or its components, including without limitation any representations or warranties concerning functionality, conformity or compliance with any safety standard or requirement of any applicable authority or regulatory body, fitness for any particular purpose, or merchantability. You are strongly advised to perform your own detailed inspection of the equipment prior to bidding.

Functions

Equipment is not tested under load. We make no representation or warranty that equipment is operating in accordance with manufacturers' specifications. No inspection has been performed with respect to any functionality aspect other than those expressly included herein. Only select photos have been provided for individual undercarriage components, and may not be indicative of the condition of the entire undercarriage as a whole.

Dimensions

Measurements are given as an estimate only. Actual loaded dimensions may vary based on truck/trailer height and the loaded machine configuration/position. It is the buyer's responsibility to measure all loads before leaving our auction site to ensure the load is safe for transport. All measurements should be verified by the buyer. DO NOT rely on these measurements for transportation purposes