

ITEM DETAILS - Doosan GC55C-9

Wednesday, October 02, 2024

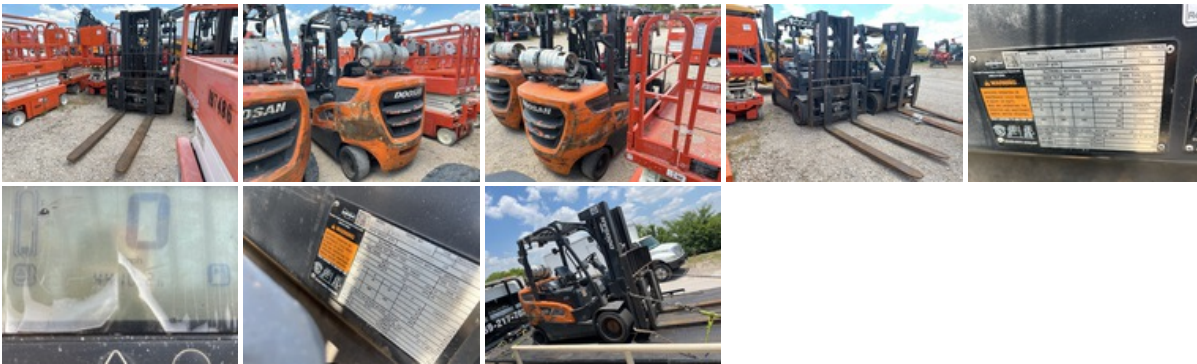
DETAILED EQUIPMENT INFORMATION

A qualified Ritchie Bros. employee collected detailed equipment information and performed functional tests on the key components of this asset.

General Appearance

Serial Number / VIN: FGB1C256000048
 Serial Number Location: Front Frame Driver Side
 Seller Reference Number: Seller Reference or Fleet Number:
 Tires/ Undercarriage: Percentage Rating:

Hour Meter / Odometer: 4410 hrs
 Condition: Not Viewed
 Features: 3 Stage Mast, 162 in Max Lift Height, 83 in Lowered Mast Height, 72 in Forks, Side Shift, Fork Positioner, Solid Pneumatic Tires, 2019 US EPA Label, 6 Cylinder 4.3 L LPG Engine



Model Description

Model Description: 11850 lb

Features

Features: Lift Truck Details:, Number of Mast Stages: 3 Stage Mast, Max Lift Height: 162 in Max Lift Height, Lowered Mast Height: 83 in Lowered Mast Height, 72 in Forks, Side Shift, Fork Positioner, Solid Pneumatic Tires

Control Station

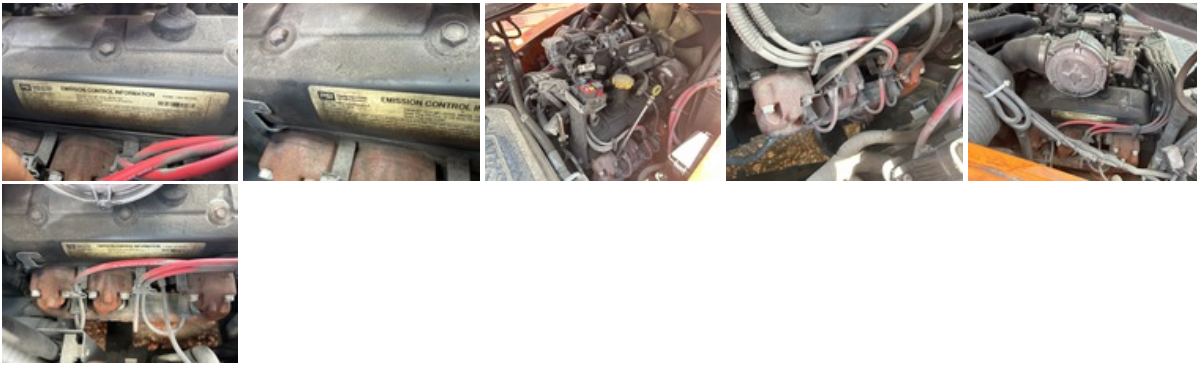
Limited Function Check: The main components are in place and operational as noted.



Engine

Emissions Status: 2019 US EPA Label

Engine: 6 Cylinder 4.3 L LPG Engine
 Limited Function Check: The engine started and ran.



Electrical

Electric: The electrical system was operational.

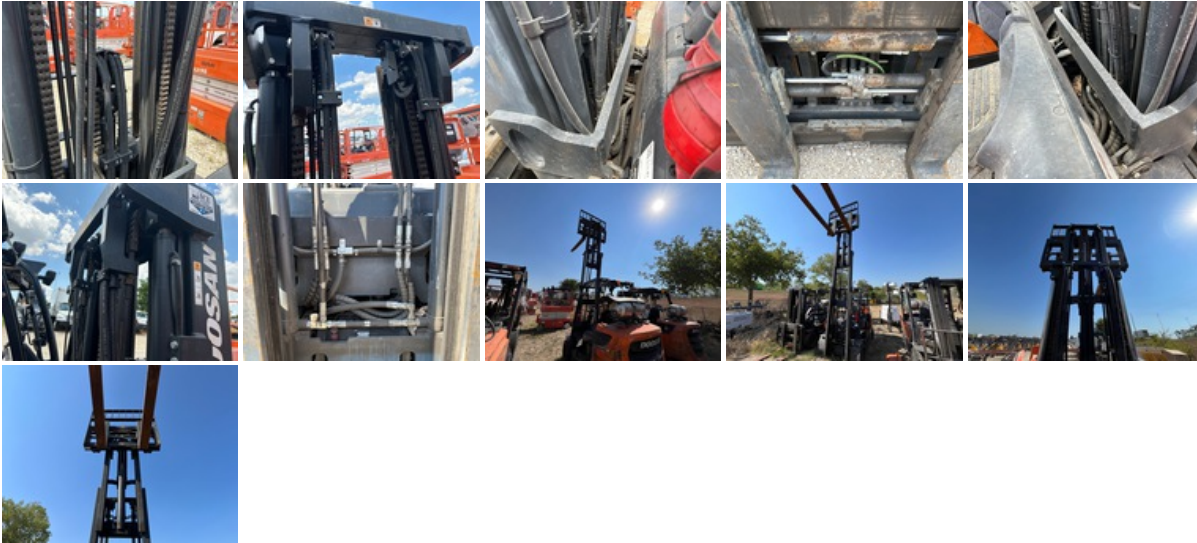


Drivetrain

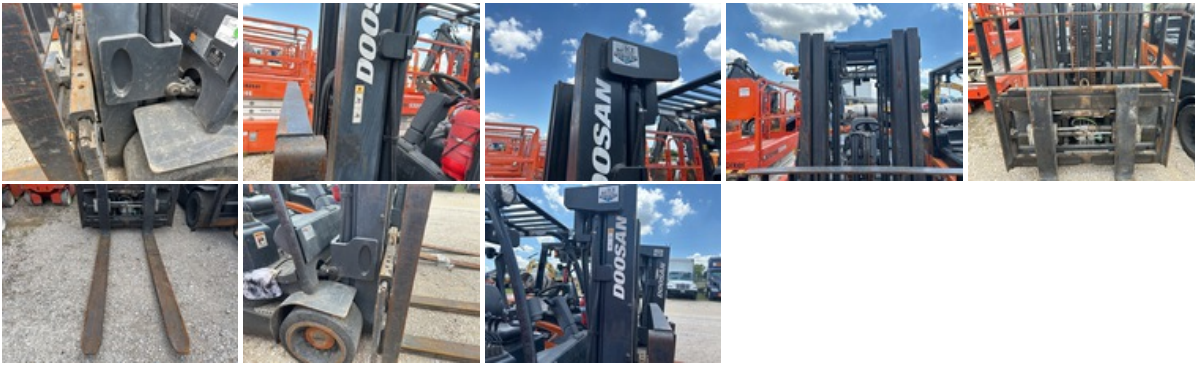
Limited Function Check: The drivetrain was operational without a load.

Hydraulics

Limited Function Check: The hydraulic system was operational.



Chassis



Logistics Information

Shipping Dimensions: 15 ft 7 in Long x 4 ft 7 in Wide x 7 ft 1 in Tall

General Shipping Information: Does this Unit Run?: Yes, If self propelled, does the unit travel?: Yes, Is the unit taller than 12?: No, Is the unit wider than 8'6"?: No, Inflated Tires - item can roll?: Yes, Noticeable fluid leaks?: No

Road Related Shipping Info: The lights and brakes were not operationally checked, Brakes Operate?: Yes, Tires OK?: Yes

DISCLAIMER

General

The Detailed Equipment Information is limited in scope, and Ritchie Bros. Auctioneers has not inspected any aspects or components of the equipment other than those expressly set forth herein. Unless expressly stated, we make no representations or warranties, express or implied, concerning the equipment or its components, including without limitation any representations or warranties concerning functionality, conformity or compliance with any safety standard or requirement of any applicable authority or regulatory body, fitness for any particular purpose, or merchantability. You are strongly advised to perform your own detailed inspection of the equipment prior to bidding.

Functions

Equipment is not tested under load. We make no representation or warranty that equipment is operating in accordance with manufacturers' specifications. No inspection has been performed with respect to any functionality aspect other than those expressly included herein. Only select photos have been provided for individual undercarriage components, and may not be indicative of the condition of the entire undercarriage as a whole.

Dimensions

Measurements are given as an estimate only. Actual loaded dimensions may vary based on truck/trailer height and the loaded machine configuration/position. It is the buyer's responsibility to measure all loads before leaving our auction site to ensure the load is safe for transport. All measurements should be verified by the buyer. DO NOT rely on these measurements for transportation purposes