

BOBCAT EQUIPMENT CONDITION REPORT

For more information, visit:
wellsfargo.com/equipmentseller



Commerical Vehicle Inspection Group
Truck, Tractor, Trailer, and Equipment
Inspections throughout North America
203-628-4325 info@cvig.com

Make:	Bobcat	Type:	Skid Steer	Inspector:	RC
Model:	S66	Hours:	1802	Inspection Date:	1/3/2025
SN:	B4SA14078	Year:	2022		

SPECIFICATIONS

ROPS:	Yes	Hours:	1802			
Enclosed Cab:	Yes	Cab Heat:	Yes	Cab A/C:	Yes	Controls: Standard
Attachment on Machine:	N/A					
Additional Attachments:	N/A					
2-Speed:	Yes	Engine MFR:	BOBCAT	Tires		
High Flow Hydraulics - Sticker:	No	Power Bob-Tach:	Yes	Keyless Start:	Yes	
Backup Camera:	No	Ride Control:	Yes	Deluxe Instrumentation:	Yes	
Hydraulic X-Change:	No					
Comments and Defects:	RUNS GOOD,NO BUCKET, NEEDS LEFT FRONT TIRE,REASR DOOR DENTED, NEEDS DECALS,					

BOBCAT EQUIPMENT CONDITION REPORT

For more information, visit:
wellsfargo.com/equipseller



Commerical Vehicle Inspection Group
Truck, Tractor, Trailer, and Equipment
Inspections throughout North America
203-628-4325 info@cvigna.com

Tire Fault Legend			
C - Cut	D - Dry	F - Flat	M - Mismatched Tread / Casings
WD - Wheel Damage			

FRONT AXLE		
Make: GALAXY Part #: 002681 Measure: 0 / 32 Condition: POOR Tread Remaining: Under 50% Fault:		Make: ASCENSO Part #: SSB331 Measure: 17 / 32 Condition: GOOD Tread Remaining: Over 50% Fault:

REAR AXLE		
Make: GALAXY Part #: 002681 Measure: 25 / 32 Condition: GOOD Tread Remaining: Over 50% Fault:		Make: ASCENSO Part #: SSB331 Measure: 20 / 32 Condition: GOOD Tread Remaining: Over 50% Fault:

BOBCAT EQUIPMENT CONDITION REPORT

For more information, visit:
wellsfargo.com/equipmentseller



Commerical Vehicle Inspection Group
Truck, Tractor, Trailer, and Equipment
Inspections throughout North America
203-628-4325 info@cvigna.com

CONDITION REPORT

Check	Comments / Deficiencies
✓ Visual Inspection	CLEAN
✓ Operational Test	PASSED - MOVED FORWARD/BACK WARD - LIFTED UP AND DOWN
✓ Lift Cylinders	NO LEAKS
✓ Tilt Cylinders	NO LEAKS
✓ Boom Arms Operations	WORKING
✓ Seat	GOOD CONDITION
✓ Tailgate Lights	GOOD CONDITION
✓ Working Lights	GOOD CONDITION
✓ Front Door	NO DAMAGES
✓ Rear and Top Window	NO DAMAGES
✓ Side Glass Complete	NO DAMAGES
✓ Boom Arms Damages	NO DAMAGES
✓ Rear Door	OPENS AND CLOSES AND STAYS CLOSED
✓ Mufflers	GOOD CONDITION
✓ ROPS Condition	GOOD CONDITION
✓ Power Bob-Tach Condition	OPERATIONAL
✓ Cab A-C Condition	WORKING
✓ Cab Heat Condition	WORKING
✓ Intake Screen	GOOD CONDITION
✓ Eng. Compartment	
N/A Hydraulic X-Change Condition	
✓ Customer Decals Visible on Unit	NO
✓ Error Codes	
X Front Left Tire Depth Percentage	FRONT LEFT TIRE UNDER 50%

PHOTOS



Front Left



Front Right



Rear



Seating / Interior

PHOTOS



PHOTOS



PHOTOS



PHOTOS



PHOTOS



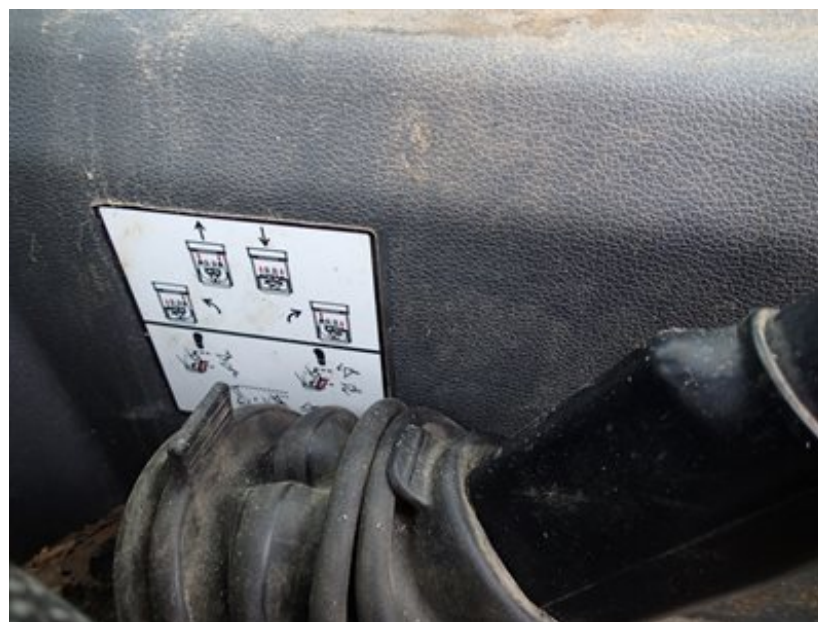
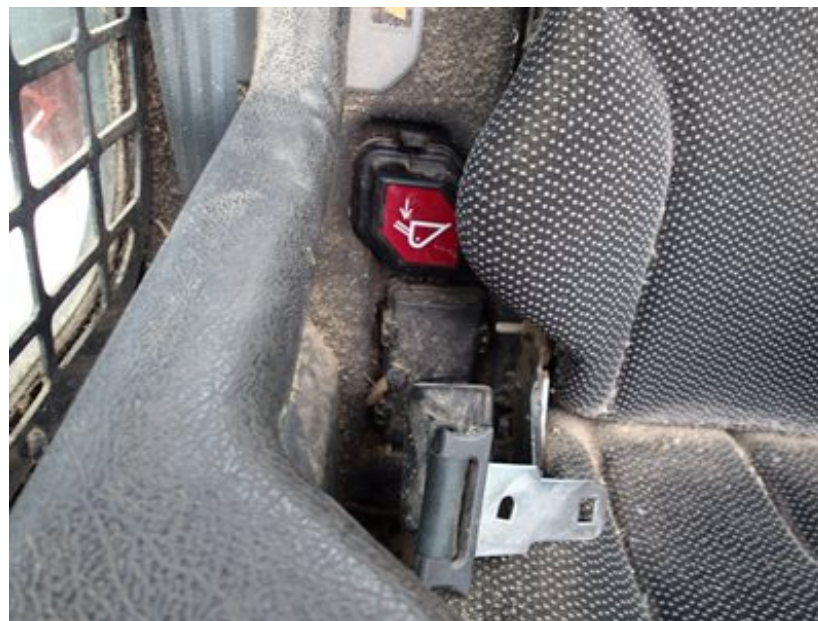
PHOTOS



PHOTOS



PHOTOS



PHOTOS



PHOTOS



PHOTOS



PHOTOS



PHOTOS



PHOTOS



PHOTOS



PHOTOS

