



DOOSAN

1903

3036

35

ING









FLORITCHEBROS





1903

FORTRACHER





















8.25-15/6.50











SOLIDPRO 700

NEE X EN

8.25-15

8POT-C1

STD

MADE IN KOREA

FRITCH BROS.  
Auctioneers

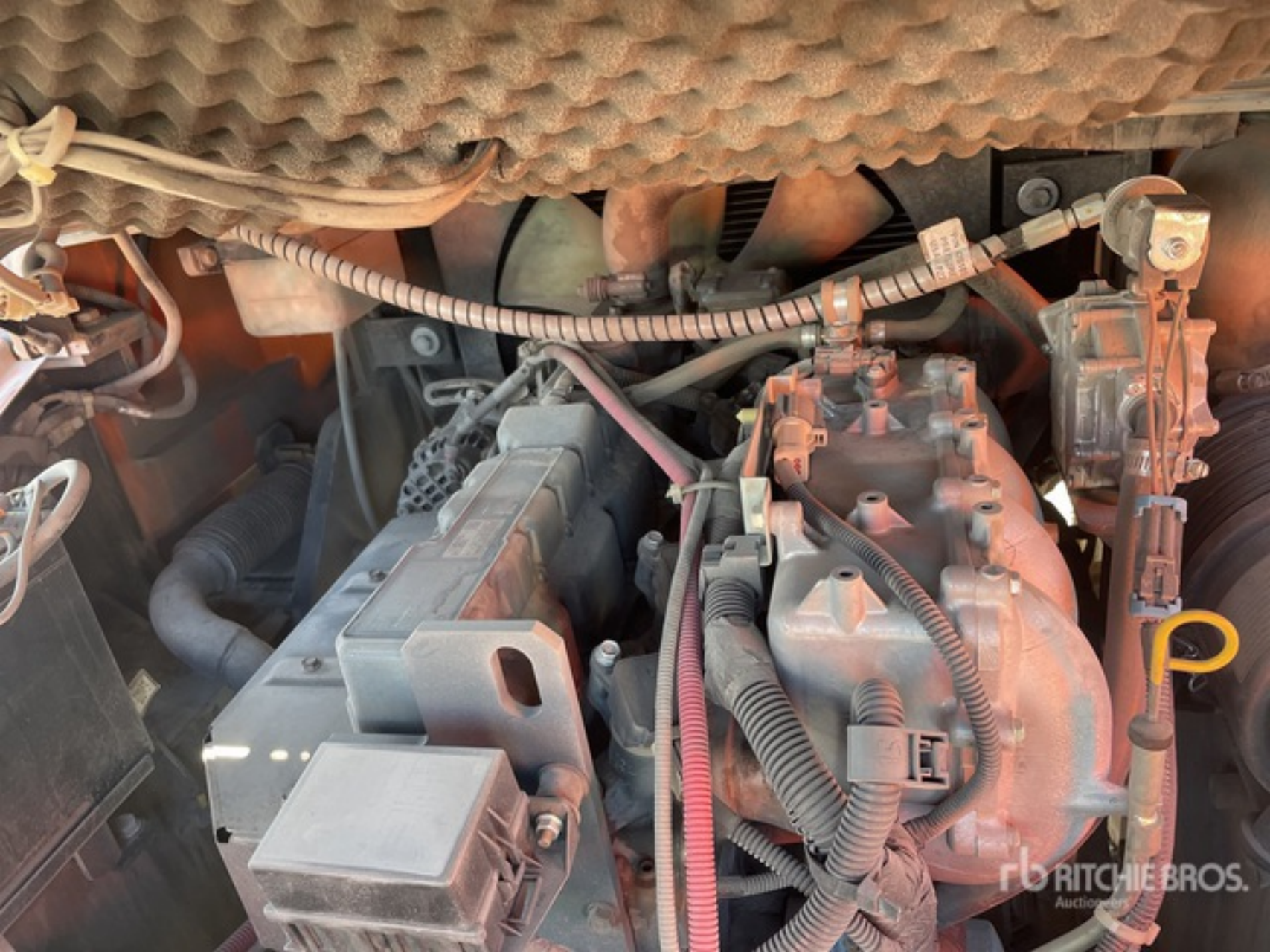






01C1405-6  
4006142-2000  
RITCHIE BRO  
Auctioneers

RITCHIE BRO  
Auctioneers









ORITCHELOS



FLORIANE BROS





DOOSAN

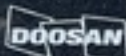
35



Model/IP Tag

Notes

Date



Doosan Corporation Industrial Vehicle BG.  
MADE IN KOREA

**WARNING**

IMPROPER OPERATION OR  
MAINTENANCE COULD RESULT  
IN INJURY OR DEATH.  
READ AND UNDERSTAND THE  
OPERATION AND MAINTENANCE  
MANUAL BEFORE OPERATING.

TRUCK CONFORMS TO ANSI/ITSDF S96.1



950209-09270 ENGLISH

MODEL		SERIAL NO.		TYPE	INDUSTRIAL TRUCK
G35S-7		FGB0R-3460-00225		LP	X
TRUCK WEIGHT ±5%		13986		LB	6344 KG
ALLOWABLE WORKING CAPACITY WITH MAST VERTICAL					
8 ° BACK TILT		MAST TYPE		TIRE TYPES	
		FFT			
TIRE TREAD		TIRE PRESS		TIRE SIZE	
44.8	IN (F) X	PSI X	KPA (F)	8.25x15	
1138	MM (R) X	PSI X	KPA (R)	7.00x12	
ATTACH		LD			
X		X			
A	B	C	D	CAPACITY	
IN	IN	IN	X	IN	7800 LB
24	167	24	X	IN	X LB
MM	MM	MM	X	MM	3500 KG
600	4250	600	X	MM	X KG
ELECTRIC TRUCK ONLY		TRUCK WT ±5% W/O BAT		X	
BAT TYPE		VOLT		MAX. AH CAP. X	
X		X		AT X HR RATE	
BAT WT		LB		X	
MIN/MAX.		X / X		IN	
		KG		X	
		BAT SIZE		X	
				MM	



5325.3















