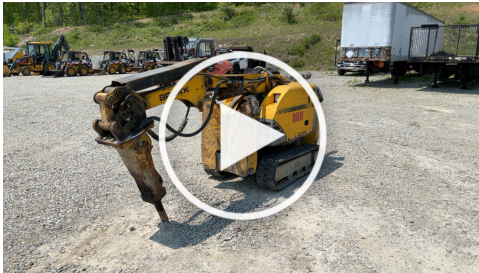




Video:



PHOTOS: Click the link below to view all high resolution images

https://app.aspenfieldservices.com/api/attachments/get/jFjhYmMCuMq2yXC32/full_report_0030624_jFjhYmMCuMq2yXC32.pdf?view

NOTE: By clicking above, you will be redirected to Aspen Field Services' website, not a Wells Fargo property.

Inspection Details	
Year	Not Available
Make	Brokk
Model	160 Robot
Serial Number	942451 - See Notes
Type	Remote Control Demolition Machine
Date Of Inspection	5/19/2021
Location of Inspection	JJ Kane Auctioneers; 11 Fortune Blvd, Shrewsbury, MA 01545
Attachment(s)/ Accessory(s)	Atlas Copco Breaker and Darda CC520 Concrete Crusher Serial Number 305
Hours	Not Available
Operations Test	NA
Enclosed Cab	NA
Boom Arm	Good Condition
Boom Arm Operations	NA
Lift Cylinder	Good Condition
Left Track Condition	Gouge



Aspen Field Services

Job #: 30624 /

Serial #: 942451

For more information, visit:

wellsfargo.com/equipseller

BROKK 160 ROBOT W/ ATLAS COPCO
BREAKER / CC520 CONCRETE CRUSHER

Inspection Details Cont'd	
Left Track Brand	Not Available
Left Track Tread Depth Measurement	10/32"
Left Track Tread Depth Percentage	Above 50%
Right Track Condition	Gouge
Right Track Brand	Not Available
Right Track Tread Depth Measurement	8/32"
Right Track Tread Depth Percentage	Under 50%
Front Left Stabilizer Pad	Worn Out
Front Right Stabilizer Pad	Worn Out
Back Left Stabilizer Pad	Worn Out
Back Right Stabilizer Pad	Worn Out
Engine Door	Unable to Open
Engine Compartment	Not Accessible
Engine MFR	Not Available
Working Lights	NA
Hydraulic Lines	Good Condition - No Leaks
Left Track Sprocket	Good Condition
Left Track Rollers	Good Condition
Left Track Idler	Good Condition
Right Track Sprocket	Good Condition
Right Track Roller	Good Condition
Right Track Idler	Good Condition
Customer Decal Visible on Unit	Yes
Comments	This machine requires a generator and specific power lines in order to operate that the site location doesn't have. Due to this, we are unable to confirm the regular operations of the machine. The serial number plate could not be located on the machine to verify the serial number. The site confirmed that this was the correct unit. Due to the placement of the stabilizer cylinders, we were unable to open the engine door to access the engine compartment.

Inspection Details Cont'd