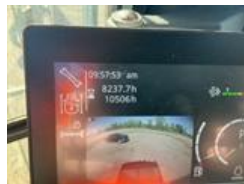
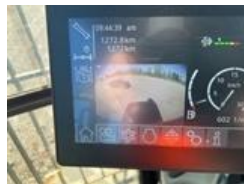


# 1000 LIEBHERR LH50M

UNIT: WLHZ1203PZK081042

[Download Reconditioning Printout](#)











## UNIT SPECS

Customer

Wells Fargo (IMS)

# LOCATION

**Wells Fargo (IMS)** ☐

Please call Pickup Support for location information  
South Vienna, OH 45369

## GENERAL APPEARANCE

Serial / VIN  
WLHZ1203PZK081042

☐ ☐

Pre-Operational Checks  
Confirm Fluids Checked: Engine Coolant. Confirm Fluids Checked: Engine(s) Oil. Confirm Fluids Checked: Hydraulic Fluid. Confirm Fluids Checked: Fuel Level. N/A: Transmission Fluid

☐ ☐

Paint  
No visible damage

☐ ☐

Cab/Canopy Overhead Structural Framework  
No visible damage

☐ ☐

Hand Rails  
No visible damage or missing components

☐ ☐

Exterior Lights  
All lights operational

☐ ☐

Make  
Liebherr

☐ ☐

Model  
LH50M

☐ ☐

Serial Number / VIN  
WLHZ1203PZK081042

☐ ☐

Body Panels  
No visible damage or missing components

☐ ☐

Steps

Left track frame steps bent, Right track frame steps bent

☐ ☐

## SAFETY

Travel Alarm

Inoperable

☐ ☐

Horn

Operational

☐ ☐

Seat Belts

Operational

☐ ☐

Safety Lock Out/Stop

Operational

☐ ☐

Swing Brake

Operational

☐ ☐

Current Safety Manual

Yes

☐ ☐

Current Operator/Maintenance Manual

Yes

☐ ☐

## CONTROL STATION

Glass

No visible damage or missing components

☐ ☐

Hydraulic Controls

Rating:

Good

☐ ☐

Drivetrain Controls

Rating:

Good

☐ ☐

Gauges

Operational

☐ ☐

Limited Function Check (Control Station)

The main components are in place and operational as noted.

☐ ☐

Seat/Armrests

No visible damage or missing components

☐ ☐

Cab Door

No visible damage or missing components

☐ ☐

Steering Controls

Rating:

Good

☐ ☐

Dash Console

Rating:

Good

☐ ☐

Engine Oil Pressure

No oil pressure indicator

☐ ☐

Warning Lights

Operational

☐ ☐

Hour Meter (Pre-inspection)

10506 hrs

☐ ☐

Hour Meter

10506 hrs

☐ ☐

Air Conditioner

Operational

☐ ☐

Heater

Operational

☐ ☐

Control Station

Cab Details:, Air Conditioner, Air Ride Seat, Cab Riser: Hydraulic Cab Riser, Rear View Camera

☐ ☐

## ENGINE

A/C Compressor

Operational



Starter

Operational



Exhaust System

No visible damage or missing components



Radiator

Rating:

Good



Oil Leaks

No dripping leaks



Fuel Leaks

No dripping leaks



Cooling System Leaks

No dripping leaks



Limited Function Check (Engine)

The engine started and ran.



Engine

2013 US EPA Label



## DRIVETRAIN

Front Drive Axle

Rating:

Good



Front Axle Oscillating Pin

Rating:

Good



Rear Drive Axle

Rating:

Good





Drive Line

Rating:

Good



Final Drives

Rating:

Good



Limited Function Check (Drivetrain)

The drivetrain was operational.



## CHASSIS

Boom/Stick Details

Standard Boom, 14 ft 1 in Stick, Auxiliary Hydraulic Plumbing



Boom Condition

Rating:

Good



Stick Condition

Hydraulic cover has damage

Rating:

Good



Boom Base Pin and Bushings

Rating:

Good



Stabilizers

Rating:

Good



Limited Function Check (Chassis)

The main components were operational in a limited check.



Tires

16.00-25 Tires



Pin And Bushings Boom To Stick

Rating:

Good



Pin And Bushings Stick To Bucket

Rating:

Good



Turntable Bearing

Rating:

Good



## HYDRAULICS

Pumps (Hydraulics)

Rating:

Good



Valves

Rating:

Good



Hydraulic Tank

Rating:

Good



Hoses (Hydraulics)

Rating:

Good



Auxiliary Hydraulic Plumbing

Not operationally checked, End of stick



Limited Function Check (Hydraulics)

The hydraulic system was operational.



Hydraulic Control Pattern Changer

Rating:

Good



Swing Motor

Rating:

Good



Hydraulic Center Swivel

Rating:

Good



Boom Lift Cylinder(s)

Rating:

Good



Stick Cylinder

Rating:

Good



## SPECIALTY

Front Attachment

Hydraulic Thumb, 3201804-004 Rotating Grapple



Grapple

Cannot operationally check. Hoses disconnected.

Rating:

Fair



## WHEEL EXCAVATOR TIRES\*

Steering Linkage

Rating:

Good



Frame Condition

Rating:

Good



Limited Function Check (Wheel Excavator Tires\*)

The main chassis components functioned during a limited check.



Brake Control

Rating:

Good



Park Brake

Rating:

Good



Limited Function Check - Brakes

The brake system functioned, stopping and holding the machine.



Left Front Tire

Size: 16.00-25 Brand: magnum Model: solideal



Left Rear Tire

Size: 16.00-25 Brand: magnum Model: solideal



Right Rear Tire

Size: 16.00-25 Brand: magnum Model: solideal



Right Front Tire

Size: 16.00-25 Brand: magnum Model: solideal



Wheel Condition

No visible damage or missing components



## RECONDITIONING

Both Track Frame Steps - Bent

\$500



Travel Alarm - Inoperable

\$200

Hydraulic Cover - Damage

\$1,500

Grapple Hoses - Disconnected

\$400

Total

\$2,600