



# Aspen Field Services

Job #: 27921 /

Serial #:

WNCE1102LPAL00542

For more information, visit:

[wellsfargo.com/equipmentseller](https://wellsfargo.com/equipmentseller)

WACKER NUESON ET145 EXCAVATOR



Video:



**PHOTOS:** Click the link below to view all high resolution images

[https://app.aspenfieldservices.com/api/attachments/get/GLFqp7459NghMaoto/full\\_report\\_0027921\\_GLFqp7459NghMaoto.pdf?view](https://app.aspenfieldservices.com/api/attachments/get/GLFqp7459NghMaoto/full_report_0027921_GLFqp7459NghMaoto.pdf?view)

NOTE: By clicking above, you will be redirected to Aspen Field Services' website, not a Wells Fargo property.

Inspection Details	
Year	Not Available
Make	Wacker Nueuson
Model	ET145
Serial Number	WNCE1102LPAL00542
Type	Excavator
Location of Inspection	JJ Kane Auctioneers - 14354 Dearborn Ave, South Beloit, IL, 61080, USA
Hours	317
Active Warnings	None
Operational Test	Operational
Enclosed Cab	Yes
Controls	Standard
Cab A/C	Yes
Cab A/C Condition	Good Condition
Cab Heat	Yes
Cab Heat Condition	Good Condition



# Aspen Field Services

Job #: 27921 /

Serial #:

WNCE1102LPAL00542

For more information, visit:

[wellsfargo.com/equipmentseller](http://wellsfargo.com/equipmentseller)

WACKER NUESON ET145 EXCAVATOR

Inspection Details Cont'd	
Backup Camera	Yes
Keyless Start	None
Seat	Good Condition
Pedals/Hand Controls	Good Condition
Top Glass	Good Condition
Visual Inspection	Clean
Attachment	Bucket
Attachment Serial Plate	Not Visible
Quick Coupler	No
Quick Coupler Condition	N/A
Bucket Cylinder	Good Condition
Stick Cylinder	Good Condition
Boom Cylinders	Good Condition
Blade Cylinders	Good Condition
Swing Cylinder	Good Condition
Boom Arm Left	Good Condition
Boom Arm Right	Good Condition
Front ROPS	Good Condition
Left ROPS	Good Condition
Cab Door	Good Condition
Right ROPS	Good Condition
Rear Glass	Good Condition
Engine Door	Good Condition
Engine Compartment	Dirty
Engine MFR	Not Visible
Intake Screen	Good Condition
Muffler	Good Condition
Left Track Brand	Not Available
Left Track Condition	Good Condition
Left Track Sprocket	Good Condition
Left Track Rollers	Good Condition
Left Track Idler	Good Condition
Left Track Tread Depth	2 1/2"
Left Track Depth Percentage	Above 50%
Right Track Brand	Not Available
Right Track Condition	Good Condition
Right Track Sprocket	Good Condition
Right Track Rollers	Good Condition
Right Track Idlers	Good Condition
Right Track Tread Depth Measurement	2 1/2"

Inspection Details Cont'd	
Right Track Tread Depth Percentage	Above 50%
Working Lights	Non Operational
Rear Lights	Good Condition
Hydraulic Lines	Good Condition - No Leaks
Comments	Both working lights above the cab are non operational.

# Aspen Field Services



Front Left / 02-15-2021



Front Right / 02-15-2021



# Aspen Field Services



Rear / 02-15-2021

# Aspen Field Services



Seat / 02-16-2021

# Aspen Field Services



WNCE1102LPAL00542 / Serial # / VIN # / 02-16-2021



Attachment Serial Plate Not Visible / 02-15-2021



# Aspen Field Services



Bucket Attachment / 02-15-2021



Bucket Cylinder / 02-15-2021

# Aspen Field Services



Stick Cylinder / 02-15-2021



Boom Cylinders / 02-15-2021



# Aspen Field Services



Hydraulic Lines / 02-15-2021



Blade Cylinders / 02-15-2021

# Aspen Field Services



Swing Cylinder / 02-15-2021



Blade / 02-15-2021



# Aspen Field Services



Boom Arm Left / 02-15-2021



# Aspen Field Services



Boom Arm Right / 02-15-2021



Engine Door / 02-15-2021

# Aspen Field Services



Engine Compartment / 02-15-2021



Engine MFR Not Visible / 02-15-2021



# Aspen Field Services



Backup Camera / 02-15-2021



Muffler / 02-15-2021



# Aspen Field Services



Intake Screen / 02-15-2021

# Aspen Field Services



Left Track Condition / 02-15-2021



Left Track Sprocket / 02-15-2021



# Aspen Field Services



Left Track Rollers / 02-15-2021



Left Track Rollers / Left Track Idler / 02-15-2021



# Aspen Field Services



Left Track Tread Depth Measurement / 02-15-2021

# Aspen Field Services



Right Track Condition / 02-15-2021



Right Track Sprocket / Rollers / 02-16-2021



# Aspen Field Services



Right Track Idler / 02-16-2021



Right Track Tread Depth Measurement / 02-15-2021

# Aspen Field Services



Working Lights / 02-15-2021



# Aspen Field Services



Working Lights / 02-15-2021

# Aspen Field Services



Working Lights / 02-15-2021



# Aspen Field Services



Working Lights / 02-15-2021

# Aspen Field Services



Rear Light / 02-16-2021



# Aspen Field Services



Front ROPS / 02-15-2021



Left ROPS / Cab Door / 02-15-2021

# Aspen Field Services



Right ROPS / 02-15-2021



Rear Glass / 02-15-2021



# Aspen Field Services



Top Glass / 02-16-2021

# Aspen Field Services



Hours 317 / 02-15-2021

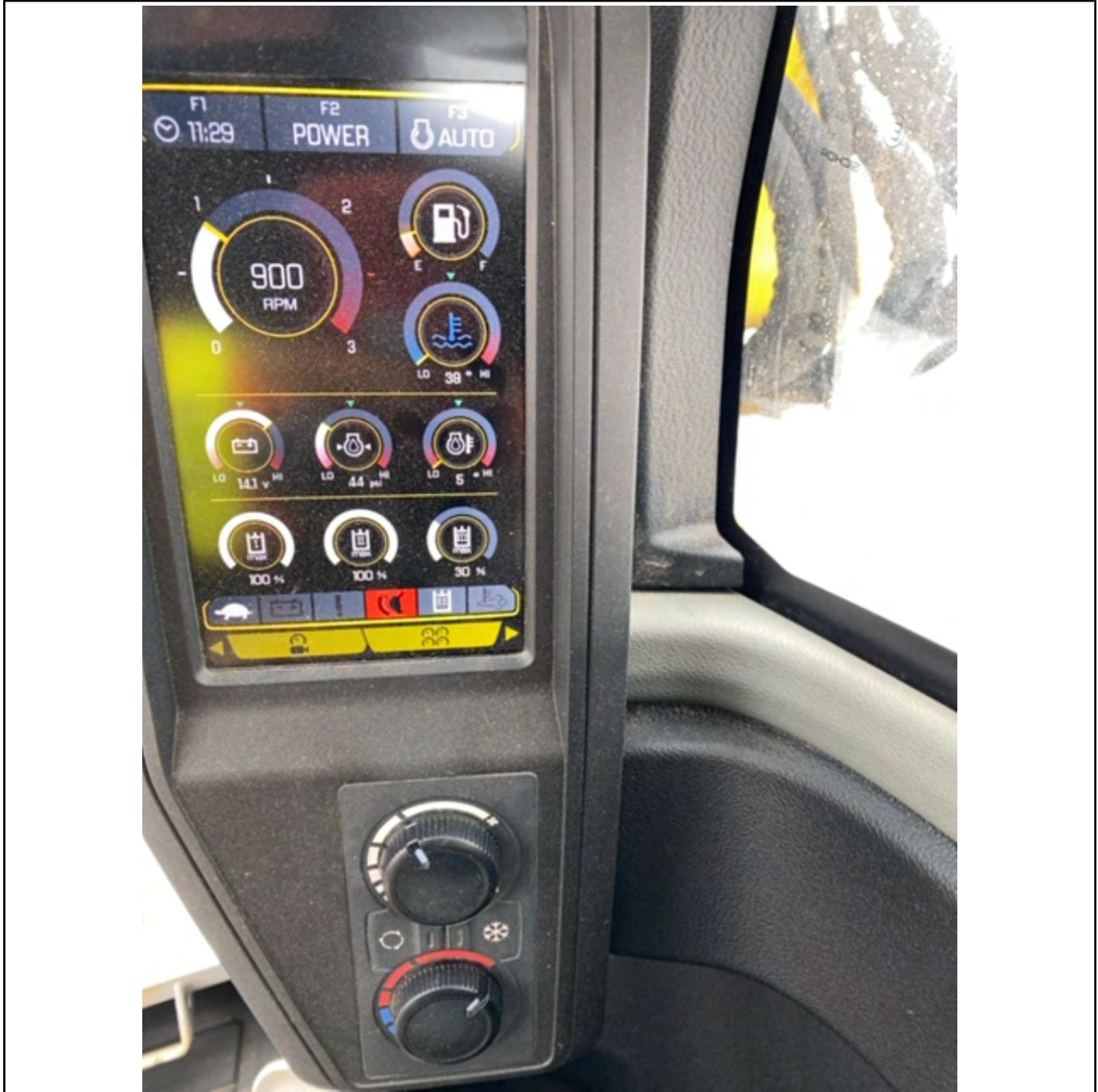


# Aspen Field Services



Active Warnings None / 02-15-2021

# Aspen Field Services



Cab AC / Cab Heat / 02-15-2021



# Aspen Field Services



Hand Controls / 02-16-2021

# Aspen Field Services



Pedals / 02-16-2021



# Aspen Field Services



Left Control / 02-16-2021

# Aspen Field Services



Right Control / 02-16-2021



# Aspen Field Services



Radio / 02-16-2021

# Aspen Field Services



Display / 02-16-2021



# Aspen Field Services



Right Mirror / 02-16-2021

# Aspen Field Services



Left Mirror / 02-16-2021



# Aspen Field Services



Working Light Non Operational / 02-16-2021



Working Light Non Operational / 02-16-2021