

# BOBCAT EQUIPMENT CONDITION REPORT

For more information, visit:  
wellsfargo.com/equipmentseller



**Commerical Vehicle Inspection Group**  
Truck, Tractor, Trailer, and Equipment  
Inspections throughout North America  
**203-628-4325** [info@cвига.com](mailto:info@cвига.com)

Make:	Bobcat	Type:	Mini Excavator	Inspector:	MBS
Model:	E55 T4	Hours:	1629		
SN:	AJ1913998	Year:	2019	Inspection Date:	3/21/2025

## SPECIFICATIONS

ROPS:	<b>Yes</b>	Hours:	<b>1629</b>		
Enclosed Cab:	<b>No</b>	Cab Heat:	<b>No</b>	Cab A/C:	<b>No</b>
Attachment on Machine:	THUMB ATTACHMENT				
Additional Attachments:	18" Bucket				
2-Speed:	<b>Yes</b>	Engine MFR:	<b>BOBCAT</b>	<b>Tracks</b>	
High Flow Hydraulics - Sticker:	<b>No</b>	Power Bob-Tach:	<b>No</b>	Keyless Start:	<b>No</b>
Backup Camera:	<b>No</b>	Ride Control:	<b>No</b>	Deluxe Instrumentation:	<b>Yes</b>
Hydraulic X-Change:	<b>No</b>				
Comments and Defects:	<b>UNIT HAS EXCESSIVE RUST, AND BUCKET/THUMB ATTACHMENT DOES NOT WORK.,</b>				

# BOBCAT EQUIPMENT CONDITION REPORT

For more information, visit:  
[wellsfargo.com/equipmentseller](http://wellsfargo.com/equipmentseller)



**Commerical Vehicle Inspection Group**  
Truck, Tractor, Trailer, and Equipment  
Inspections throughout North America  
**203-628-4325** [info@cvigna.com](mailto:info@cvigna.com)

## Tire Fault Legend

C - Cut	D - Dry	F - Flat	M - Mismatched Tread / Casings
WD - Wheel Damage			

## TRACKS

Make: UNKNOWN  
Part #:  
Measure: 18 / 32  
Condition: FAIR  
Tread Remaining: Over 50%  
Fault:

Make: UNKNOWN  
Part #:  
Measure: 18 / 32  
Condition: FAIR  
Tread Remaining: Over 50%  
Fault:

# BOBCAT EQUIPMENT CONDITION REPORT

For more information, visit:  
wellsfargo.com/equipmentseller



**Commerical Vehicle Inspection Group**  
Truck, Tractor, Trailer, and Equipment  
Inspections throughout North America  
**203-628-4325** [info@cvigna.com](mailto:info@cvigna.com)

## CONDITION REPORT

	Check	Comments / Deficiencies
X	Visual Inspection	RUST DAMAGED
✓	Operational Test	PASSED - MOVED FORWARD/BACK WARD - LIFTED UP AND DOWN
✓	Lift Cylinders	NO LEAKS
✓	Tilt Cylinders	NO LEAKS
✓	Boom Arms Operations	WORKING
X	Seat	CRACKED
N/A	Tailgate Lights	
N/A	Working Lights	
N/A	Front Door	
X	Rear and Top Window	MISSING
N/A	Side Glass Complete	
X	Boom Arms Damages	BUCKET/THUMB DO NOT WORK/ NEEDS DIAGNOSED
✓	Rear Door	OPENS AND CLOSES AND STAYS CLOSED
✓	Mufflers	GOOD CONDITION
X	ROPS Condition	EXTREME RUST DAMAGE
✓	Power Bob-Tach Condition	
N/A	Cab A-C Condition	
N/A	Cab Heat Condition	
✓	Intake Screen	GOOD CONDITION
✓	Eng. Compartment	
N/A	Hydraulic X-Change Condition	
✓	Customer Decals Visible on Unit	NO
✓	Error Codes	
X	Condition Report	HANDLES MISSING FOR DRIVE CONTROLS

PHOTOS



Front Right



Front Left



Rear



Seating / Interior



PHOTOS





## PHOTOS





## PHOTOS





PHOTOS





# PHOTOS



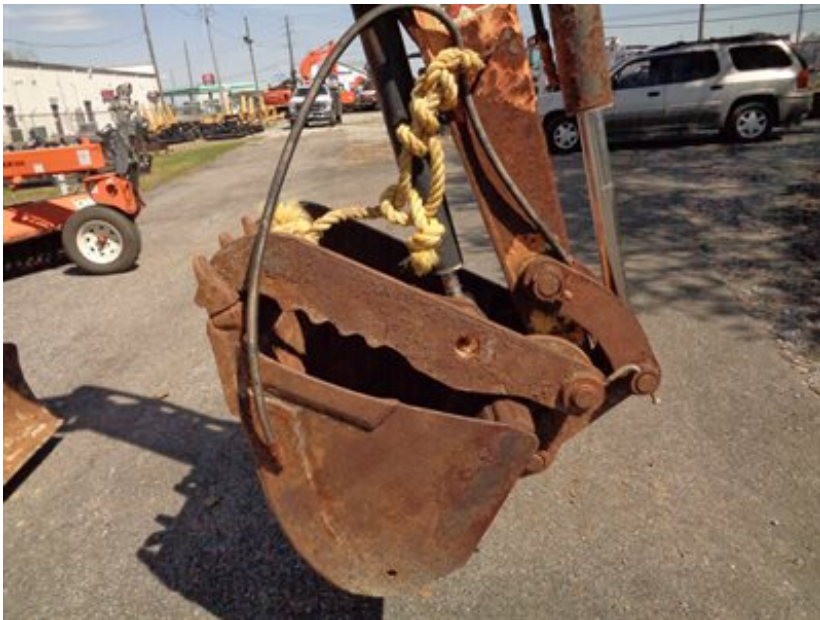


# PHOTOS





## PHOTOS





PHOTOS





## PHOTOS

